

The TwoLine family began as part of a custom type collection designed for the 2015 degree shows at the London College of Communication, and was extensively revised and expanded on behalf of the American Society of Typographic Aficionados for the identity of TypeCon in 2016.

Drawn in two variants: Soft, with rounded terminals, and Hard, with square terminals, each in nine weights, TwoLine is a part of MuirMcNeil's extensive Two Type System. The many subgroups that comprise the Two System have not been designed as independent alphabets but as the framework of an expansive design space in which individual glyphs are configured to collaborate with each other harmoniously.

A common grid determines the positioning of both letterforms, the spaces between them, and sets of corresponding base pattern panels, with every element aligning precisely, so that the superimposition of any pair of the system's 200+ modular alphabets will result in a single, unique instance taken from thousands of possible combinations. Working with design software, users can amalgamate selected styles either in precisely interlocking layers or in calibrated offsets, applying outlines, tints, colours, textures, patterns and transparencies as appropriate.

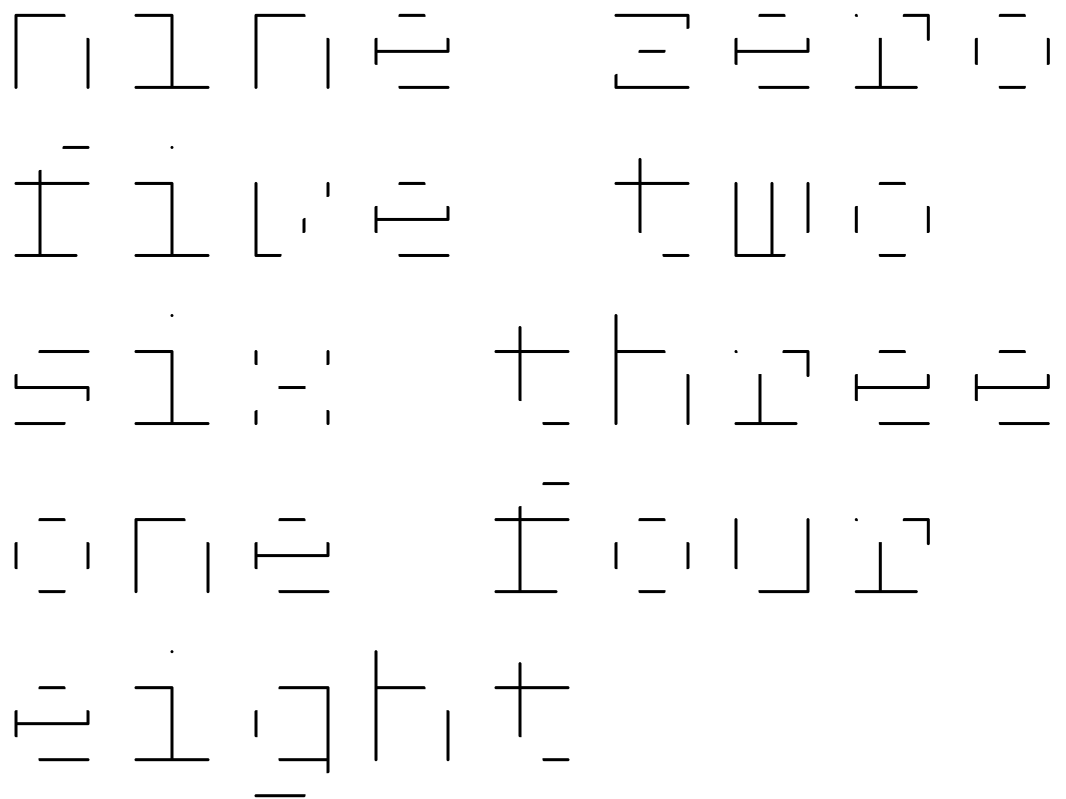
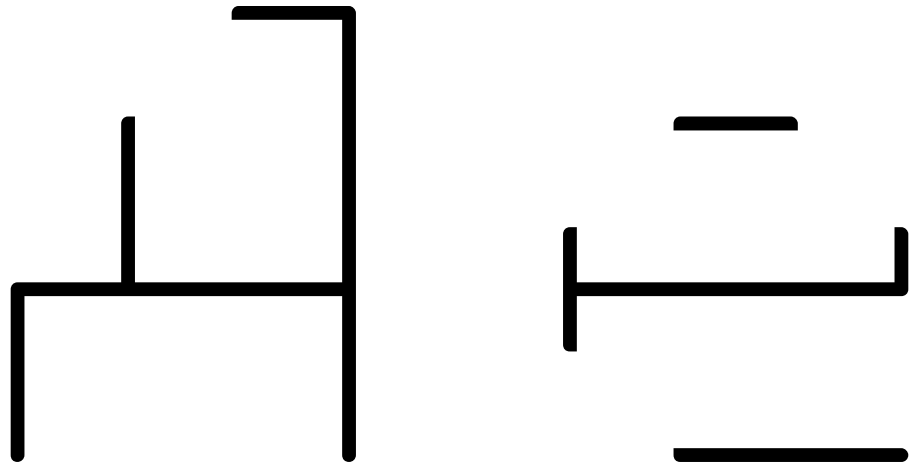
The design opportunities offered by the Two System are documented in detail in System Process Form, published by Volume / Unit Editions and Thames & Hudson. The publication presents a curated selection of these two-part compounds along with many even more exuberant type forms composed from the millions of options afforded by combinations of three layers.

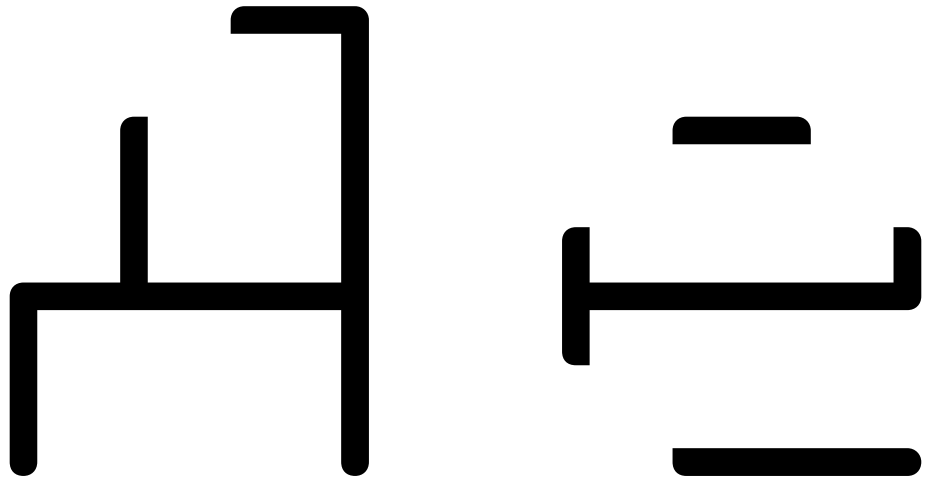
TwoLine A Soft



TwoLine B Hard







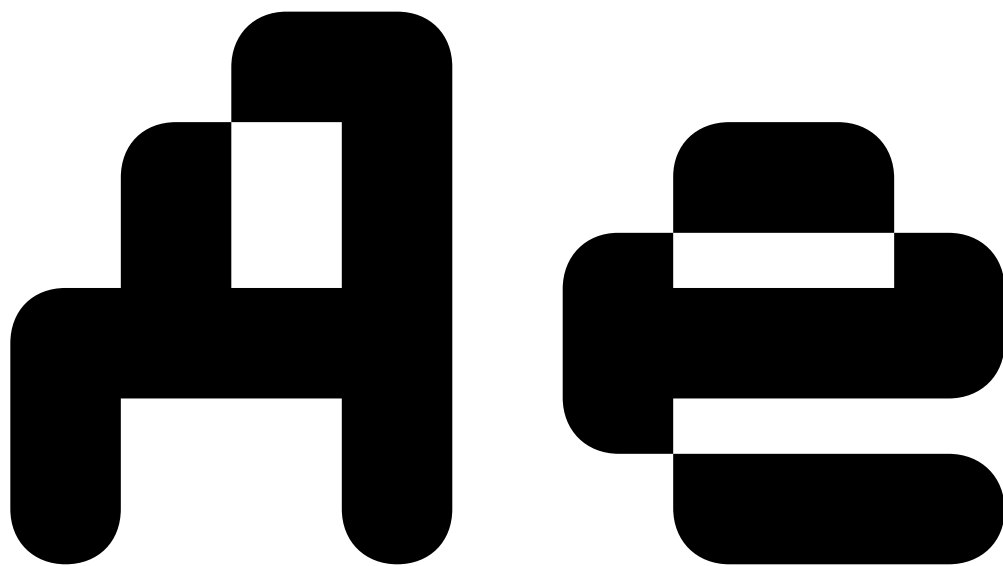
nine zero
five two
six three
one four
eight t

4 5

nine zero
five two
six three
one four
eight

9 8

nine zero
five two
six three
one four
eight t



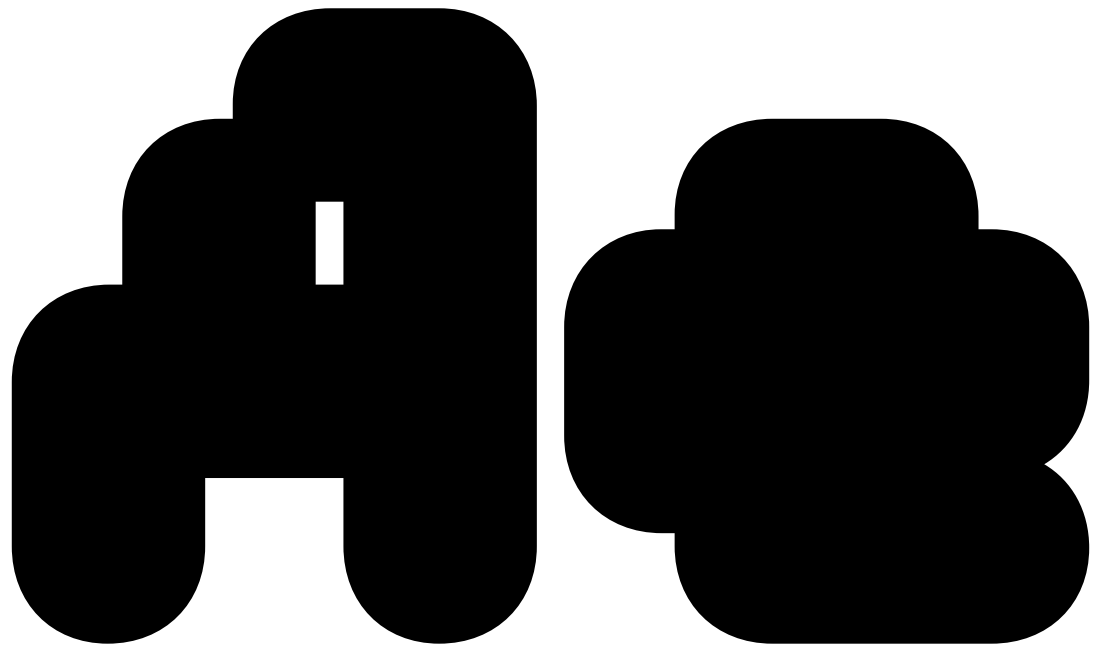
nine zero
five two
six three
one four
eight

A E

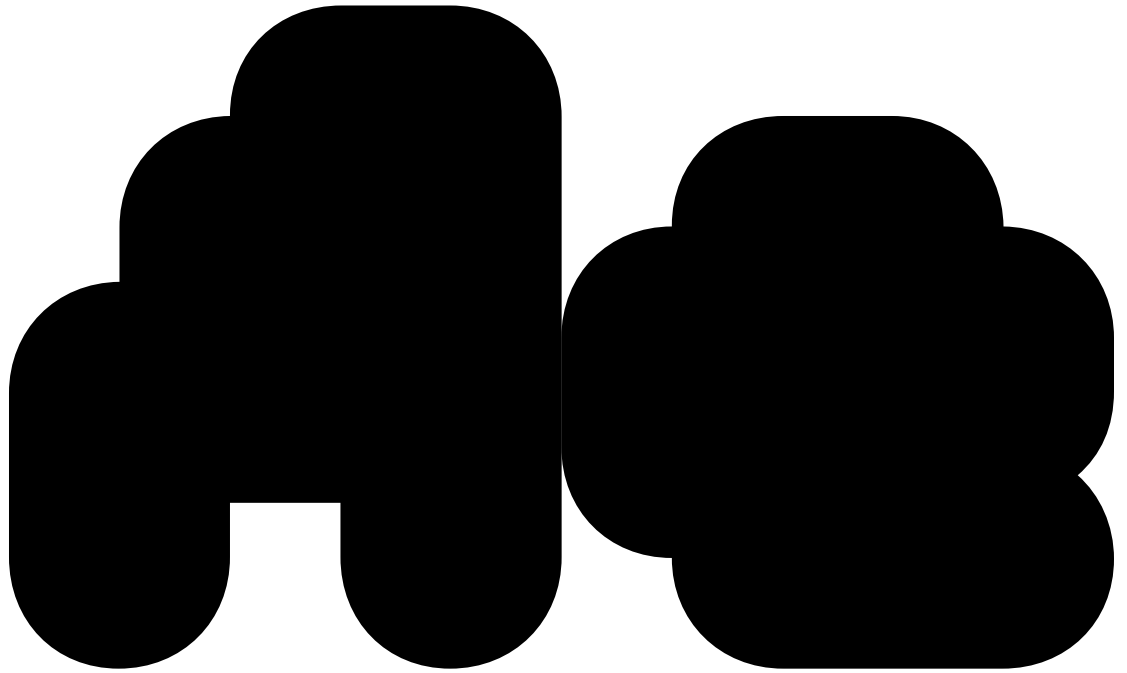
nine zero
five two
six three
one four
eight

A B

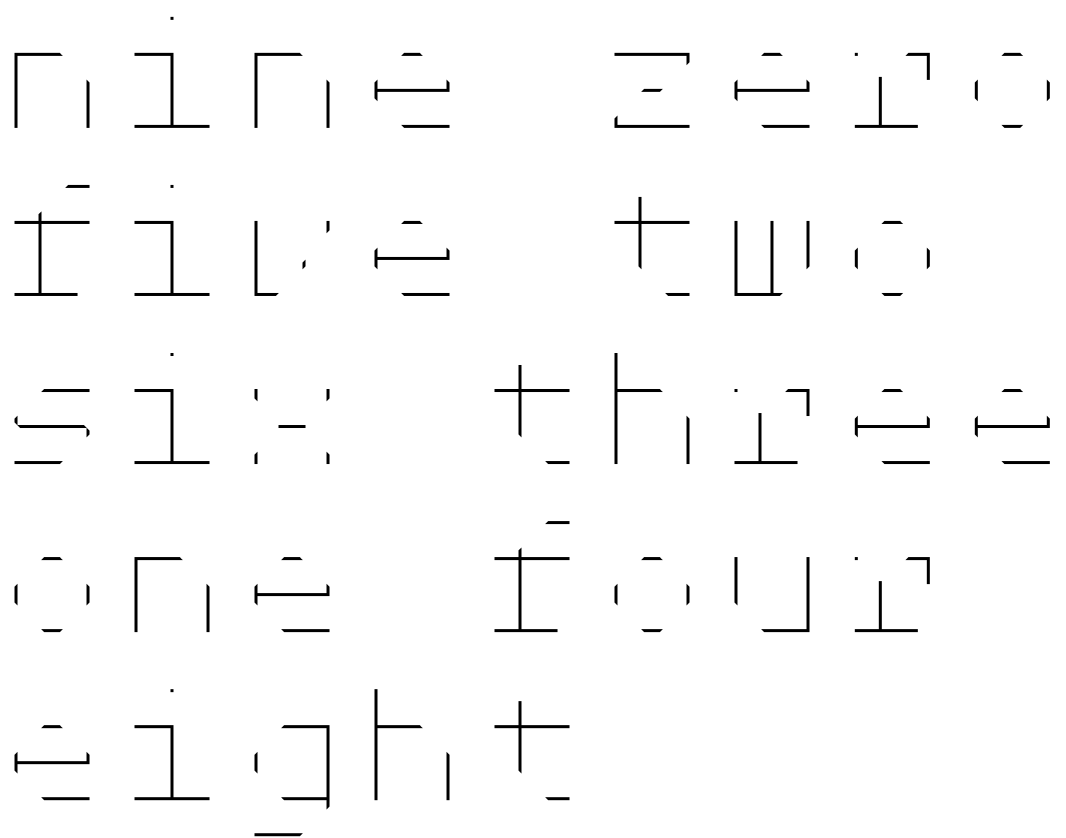
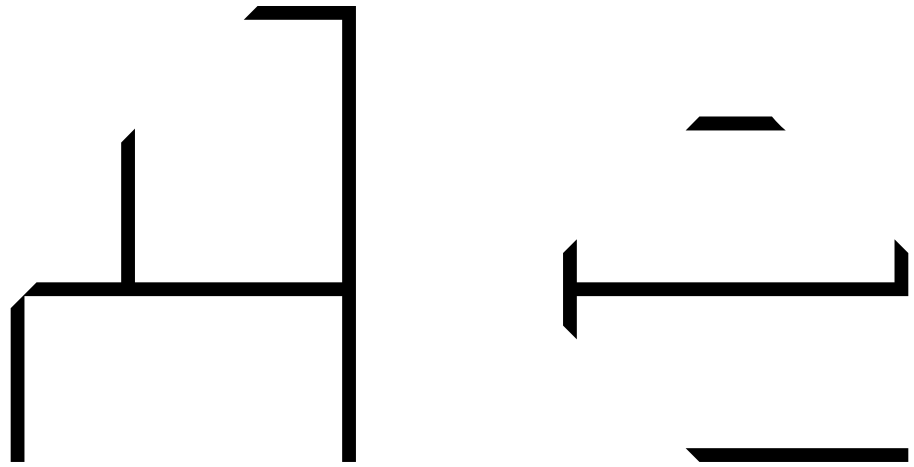
nine zero
five two
six three
one four
eight



nine zero
five two
six three
one four
eight



nine zero
five two
six three
one four
eight



9 8

n i n e z e r o
f i v e t w o
s i x t h r e e
o n e f o u r
e i g h t

9 e

nine zero
five two
six three
one four
eight

1 2

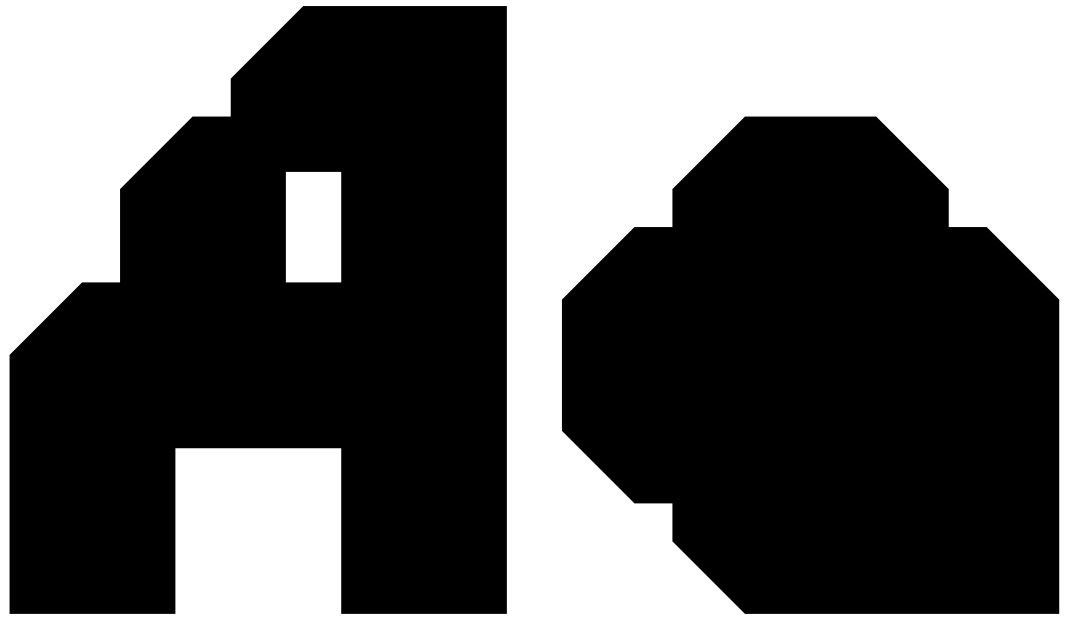
nine zero
five two
six three
one four
eight



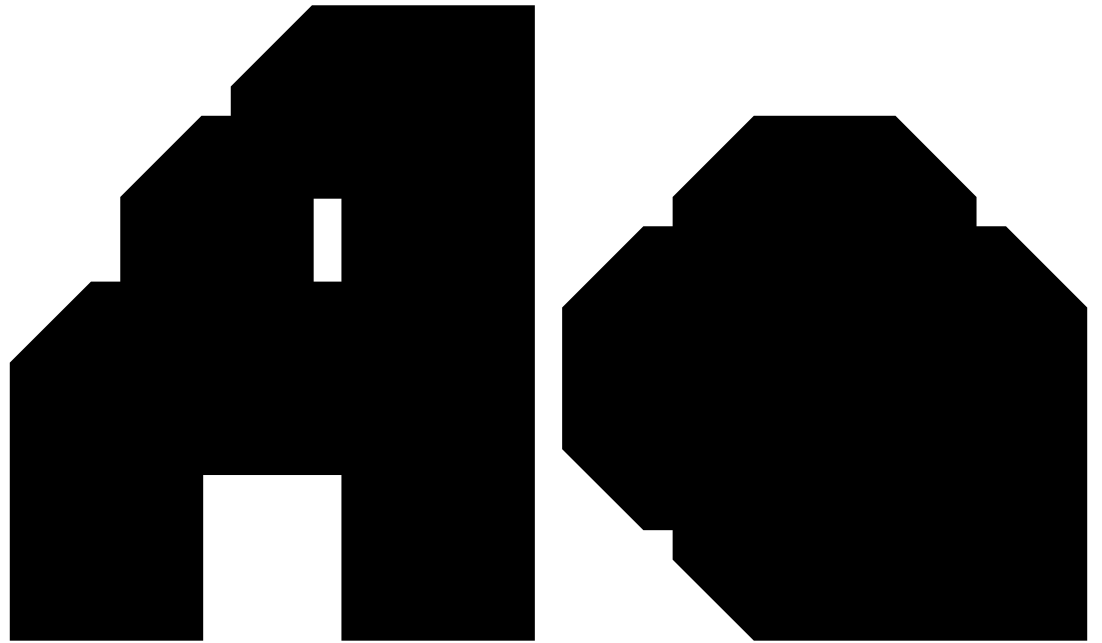
nine zero
five two
six three
one four
eight

A E

nine zero
five two
six three
one four
eight



nine zero
five two
six three
one four
eight



nine zero
five two
six three
one four
eight

