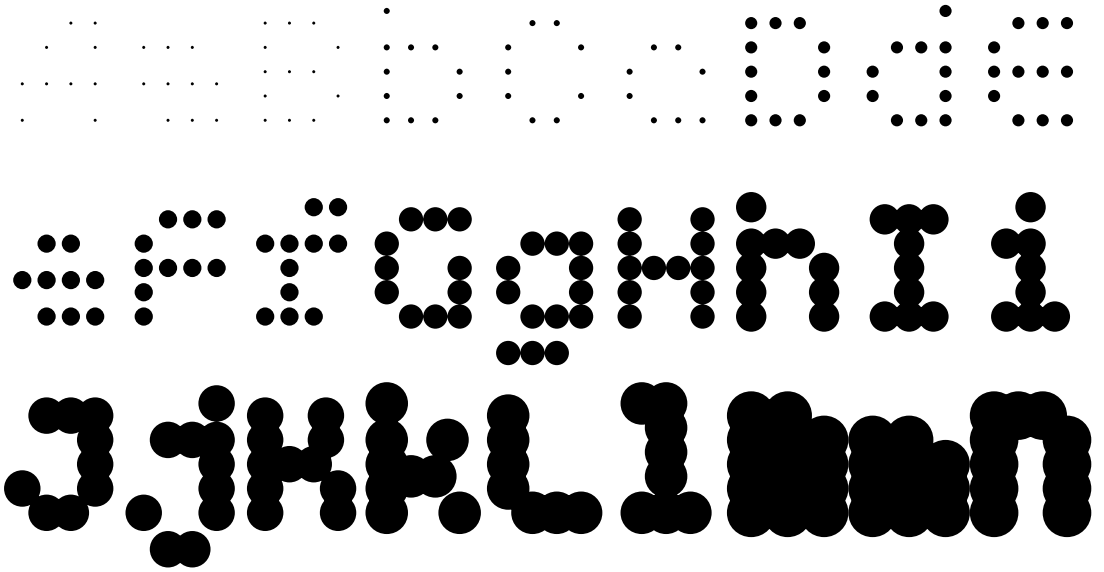


TwoPoint H and I are monospaced modular typefaces in matching dotted and rounded linear forms respectively. They are part of MuirMcNeil's extensive Two Type System. The many subgroups that comprise the Two System have not been designed as independent alphabets but as the framework of an expansive design space in which individual glyphs are configured to collaborate with each other harmoniously.

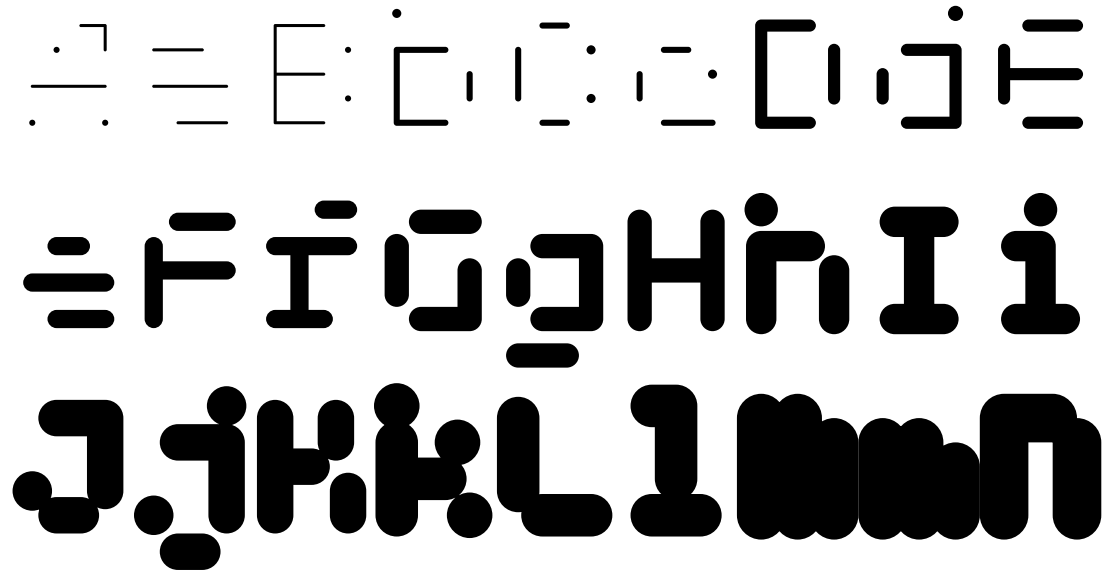
A common grid determines the positioning of both letterforms, the spaces between them, and sets of corresponding base pattern panels, with every element aligning precisely, so that the superimposition of any pair of the system's 200+ modular alphabets will result in a single, unique instance taken from thousands of possible combinations. Working with design software, users can amalgamate selected styles either in precisely interlocking layers or in calibrated offsets, applying outlines, tints, colours, textures, patterns and transparencies as appropriate.

The design opportunities offered by the Two System are documented in detail in System Process Form, published by Volume / Unit Editions and Thames & Hudson. The publication presents a curated selection of these two-part compounds along with many even more exuberant type forms composed from the millions of options afforded by combinations of three layers.

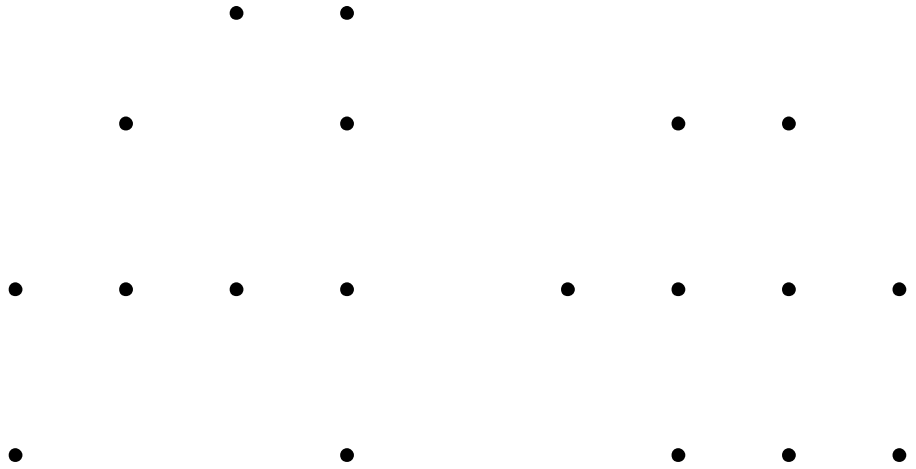
TwoPoint H



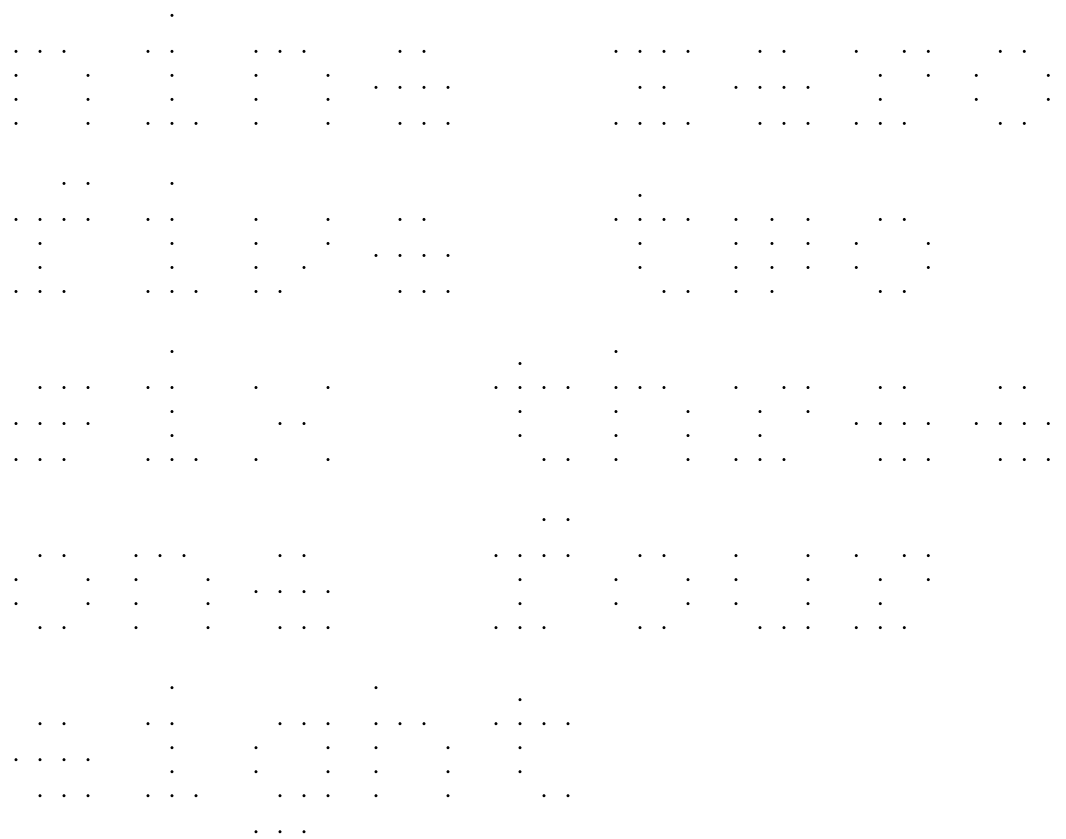
TwoPoint I



TwoPoint H
016Thin
290pt

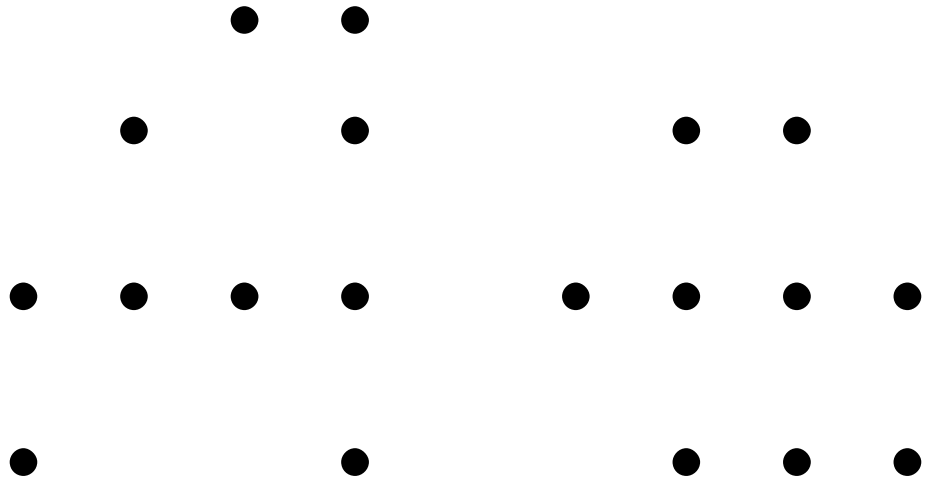


TwoPoint H
016Thin
63pt

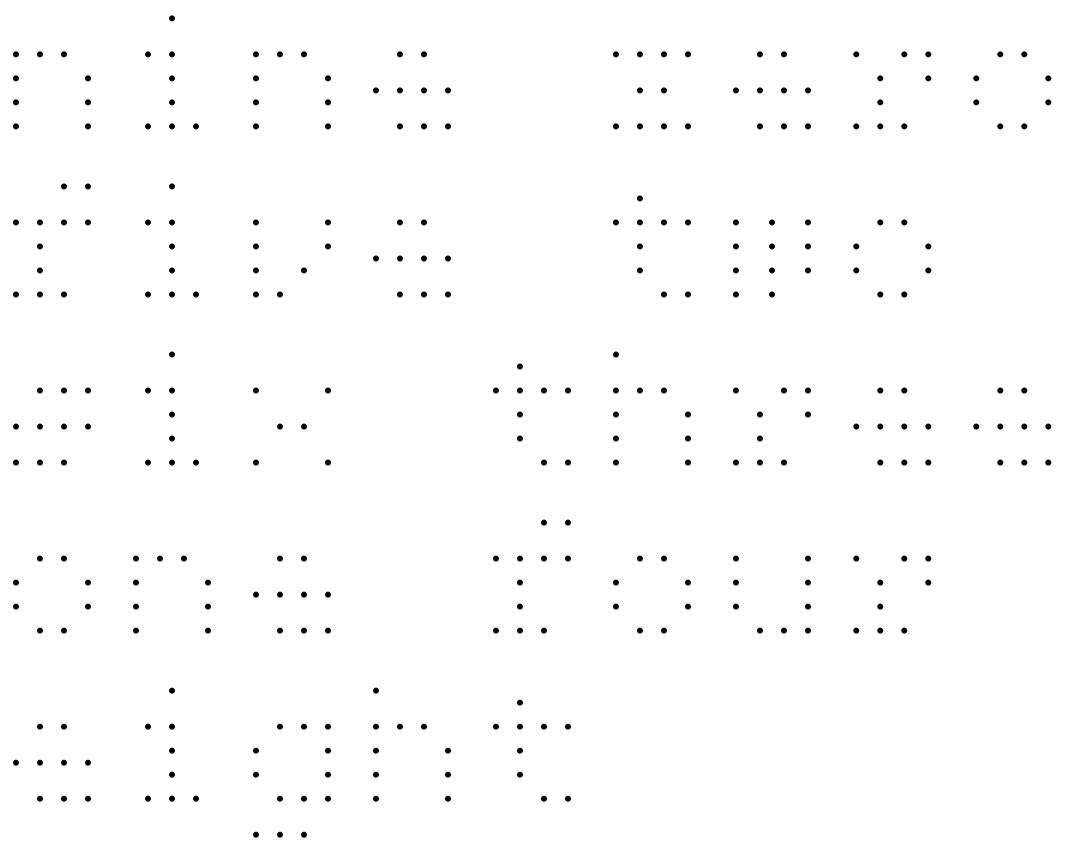


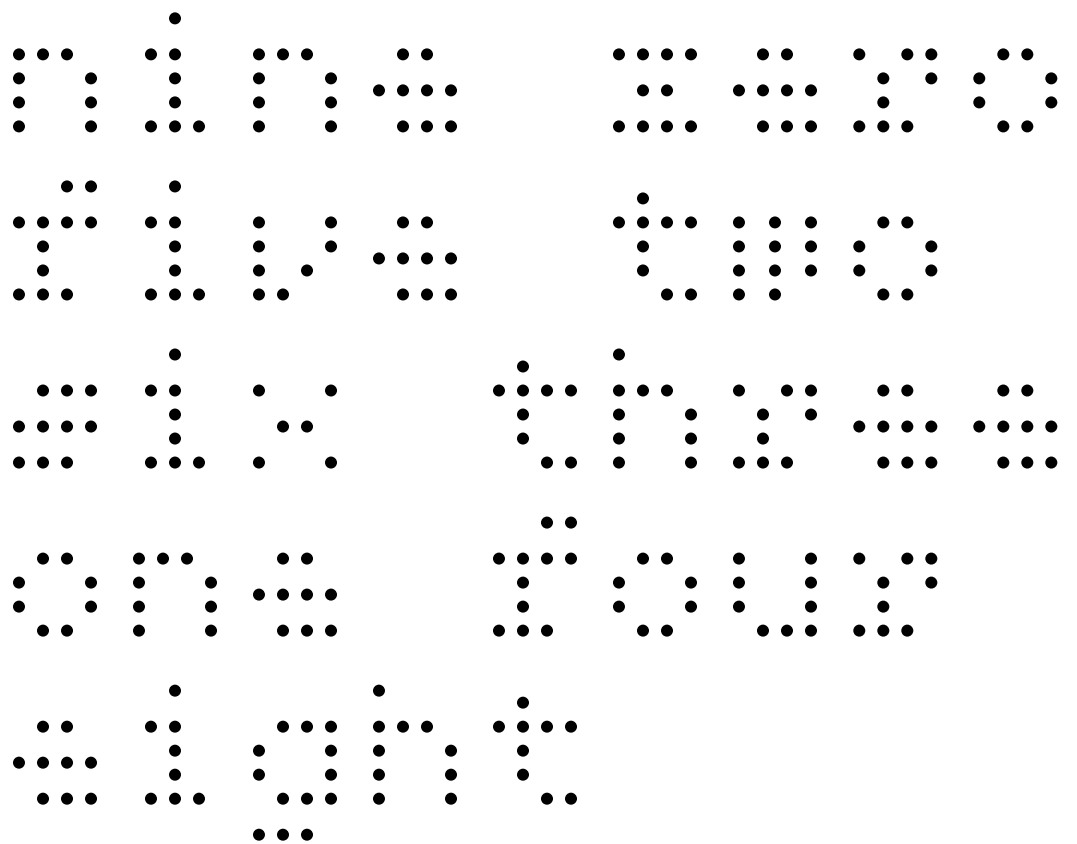
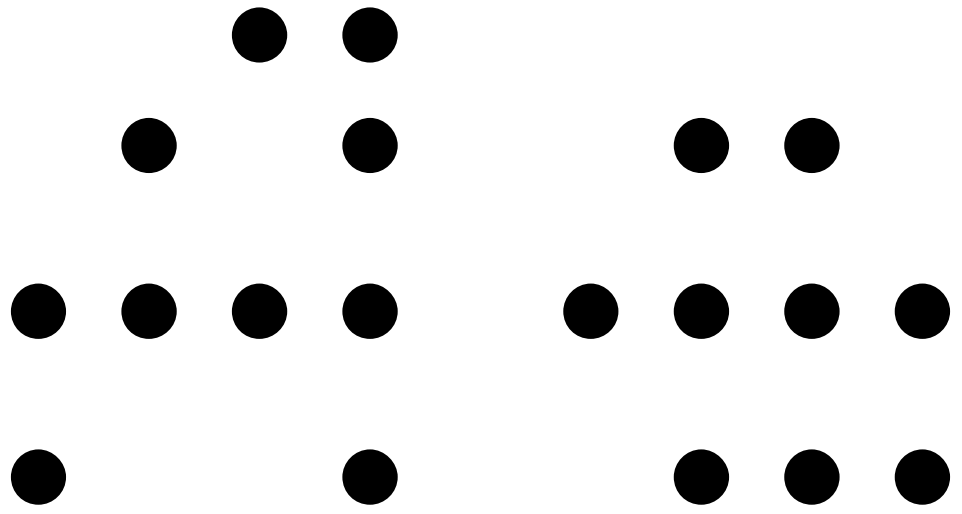
TwoPoint H
032 Extra Light

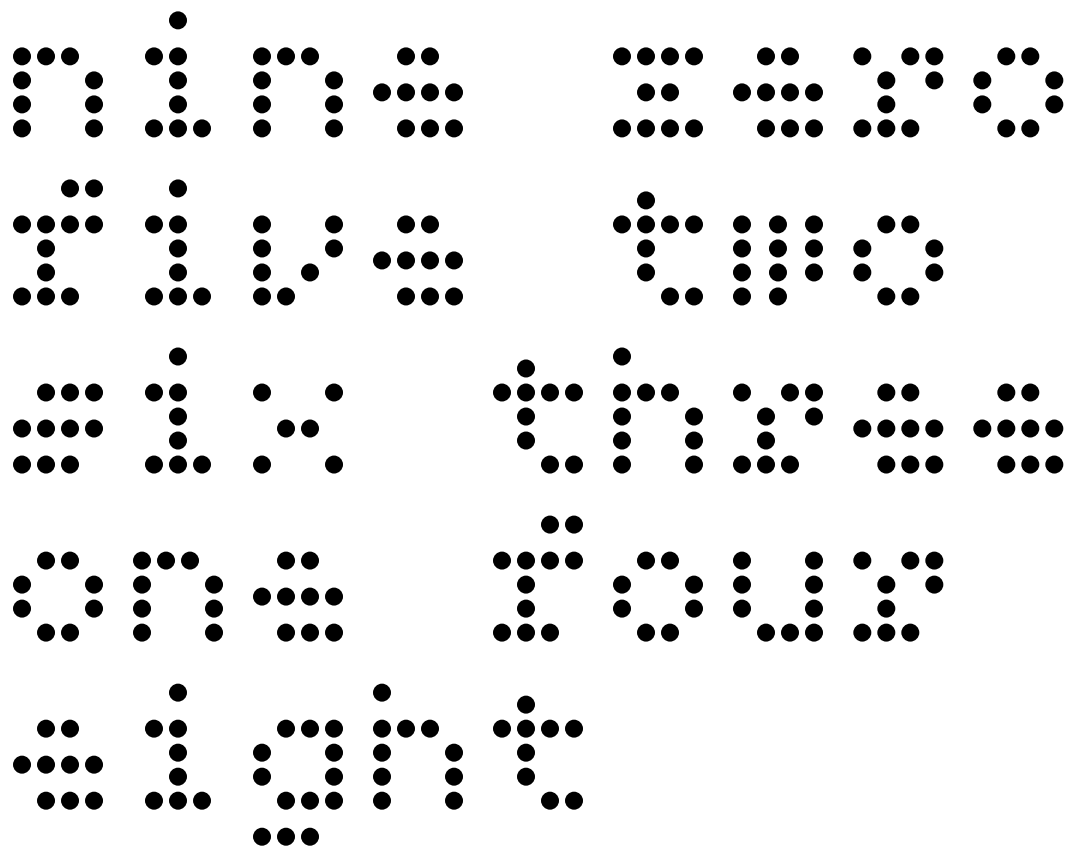
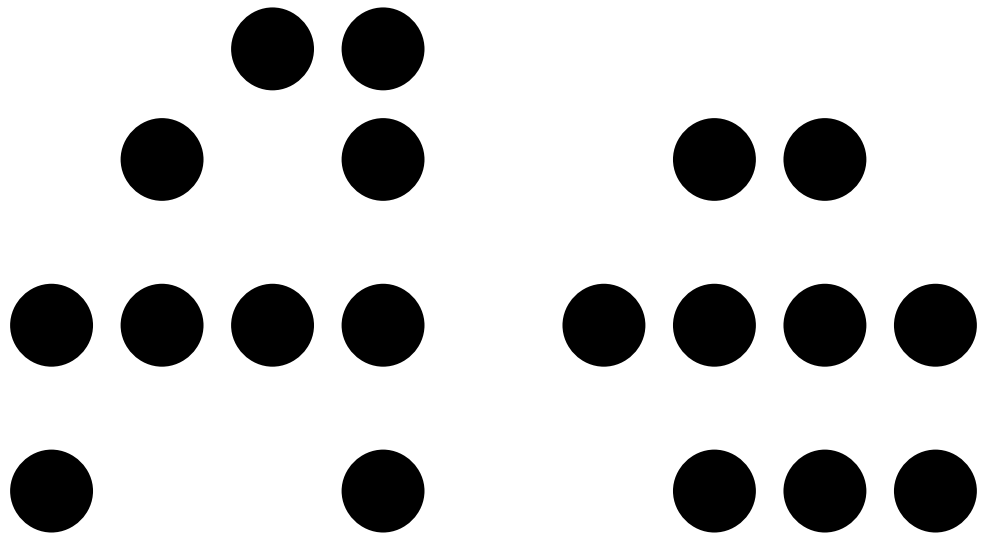
TwoPoint H
032 Extra Light
290pt

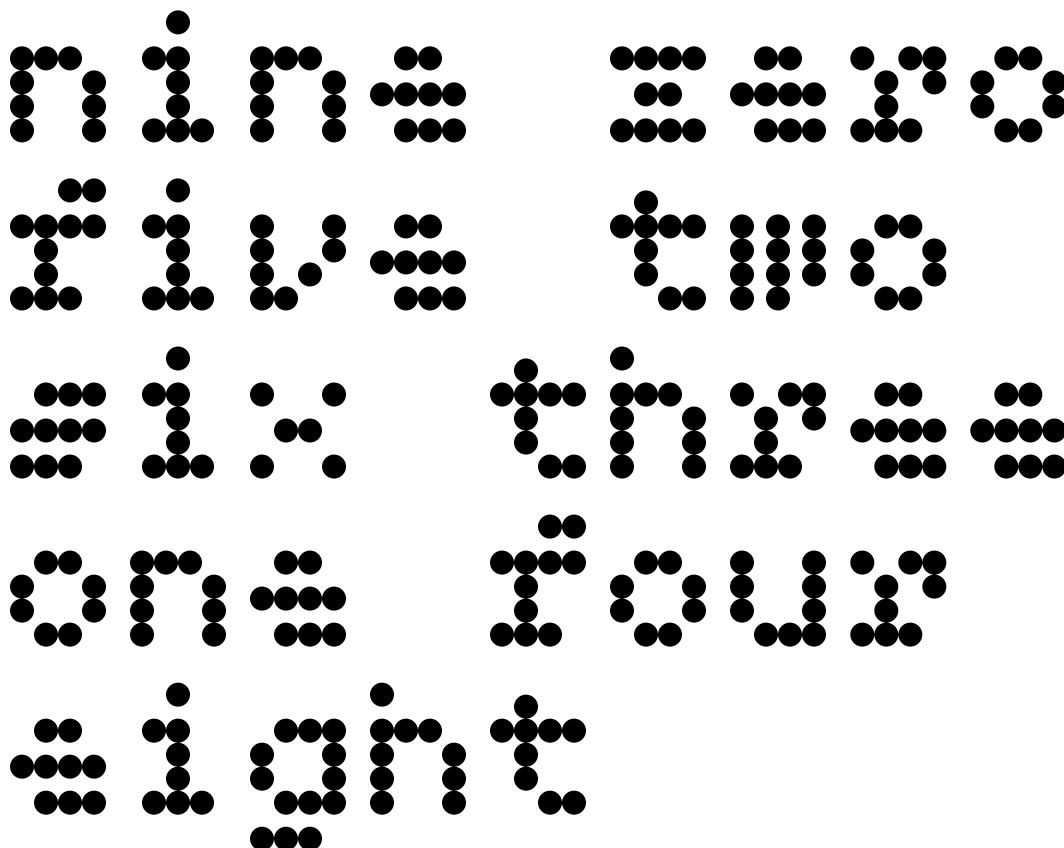
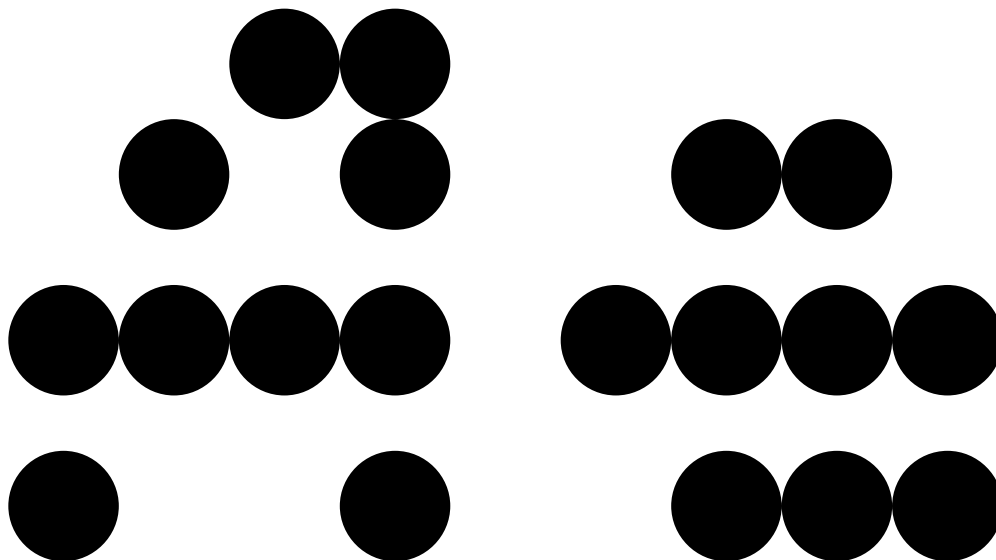


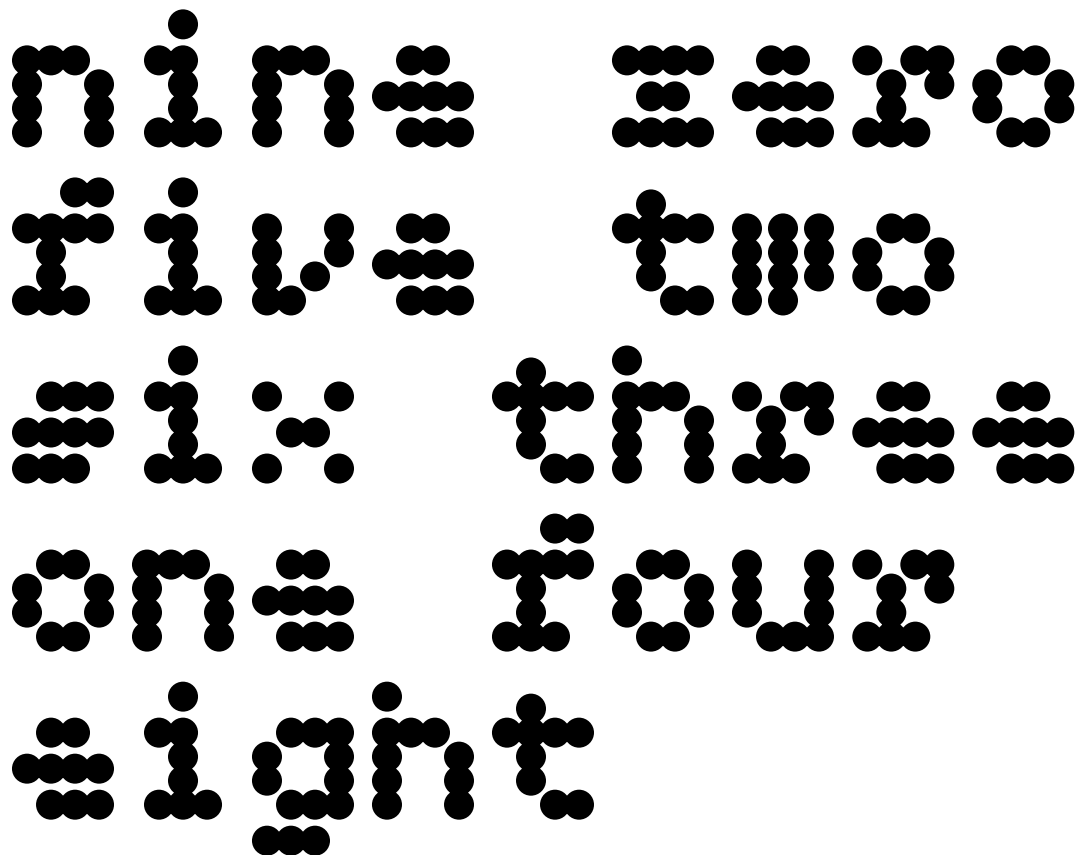
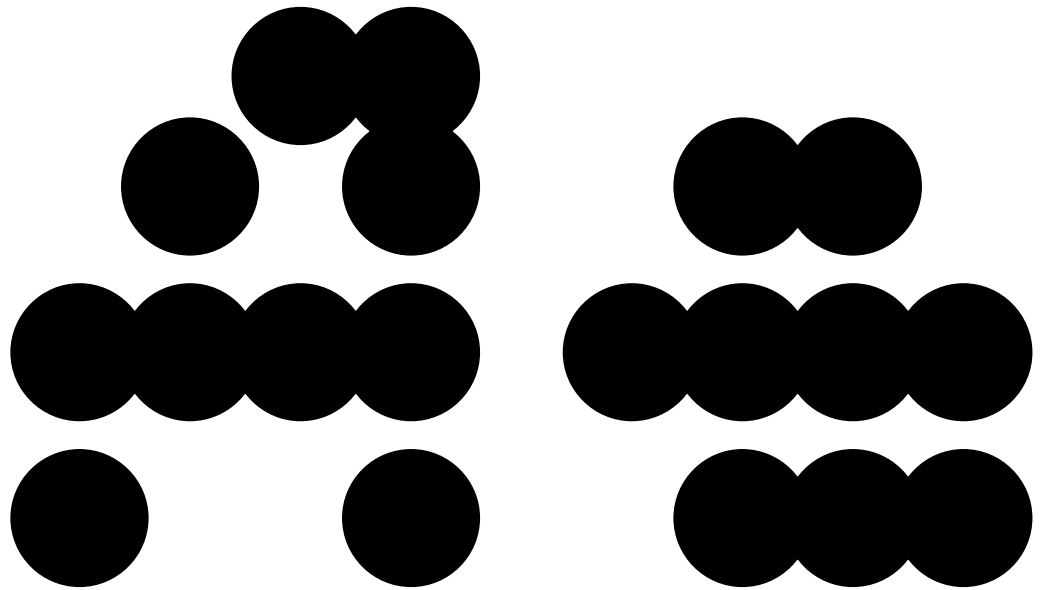
TwoPoint H
032 Extra Light
63pt

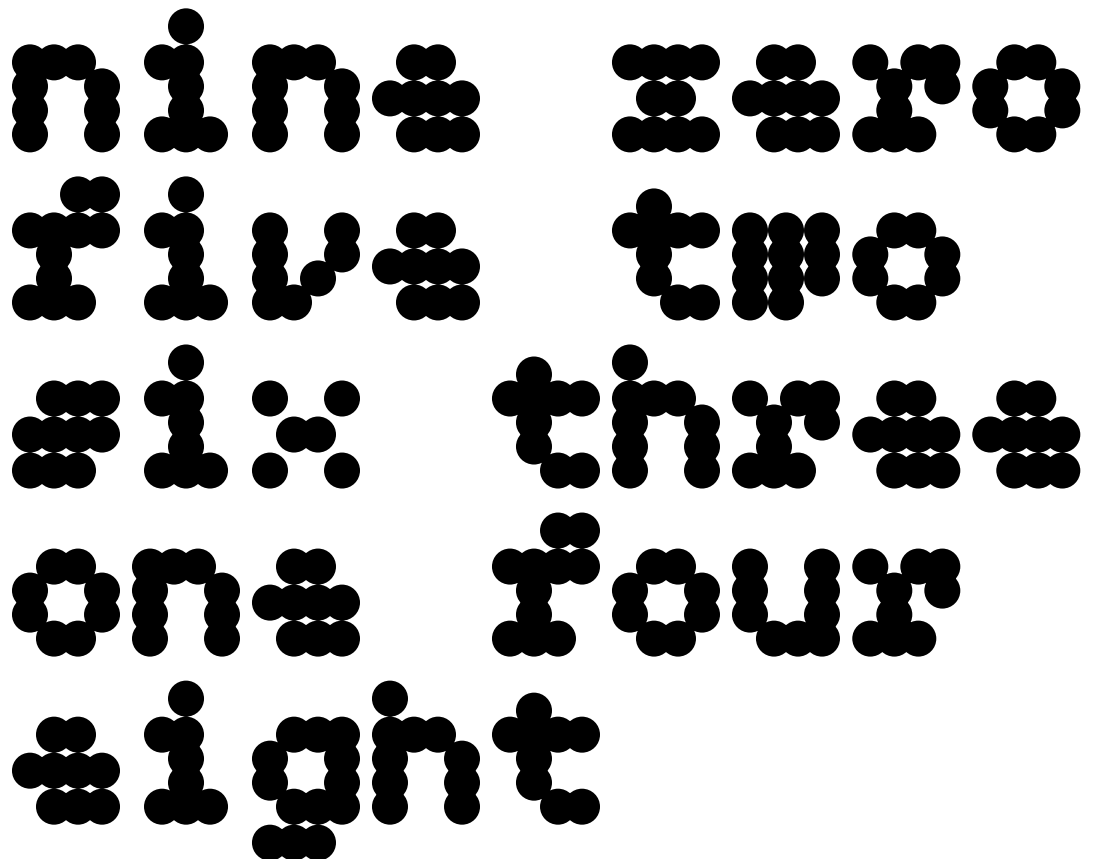
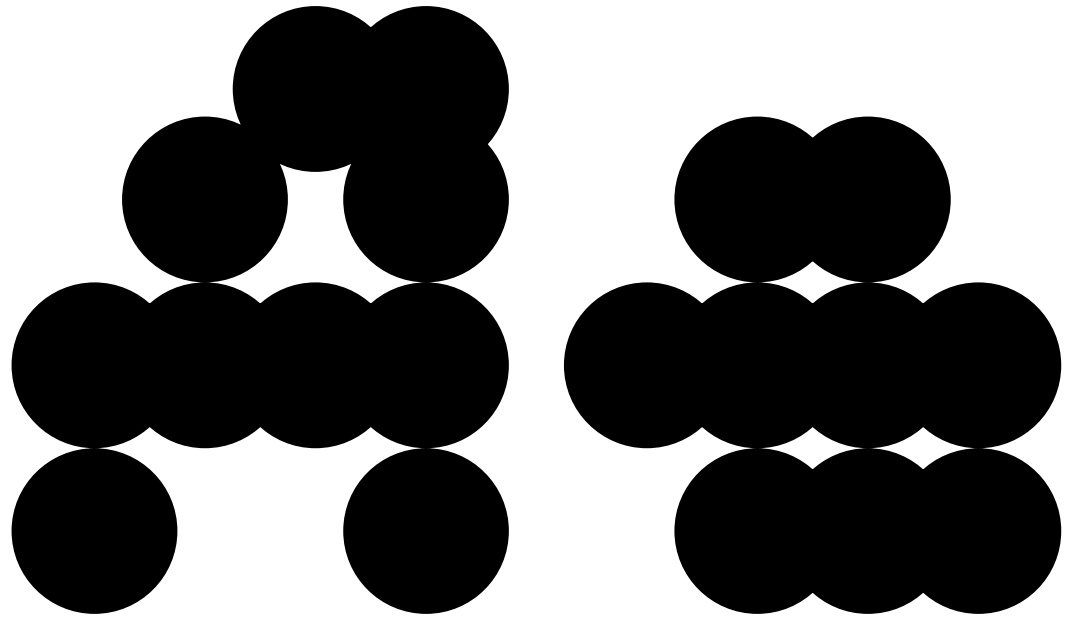


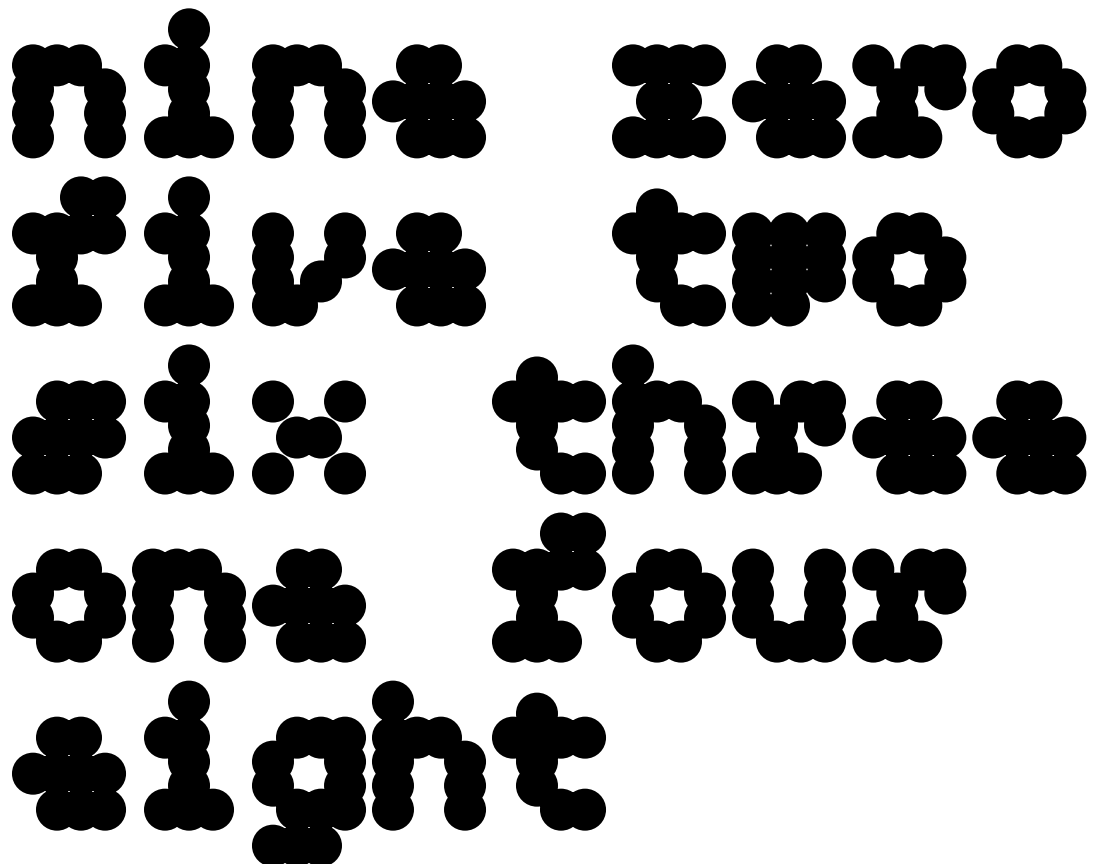
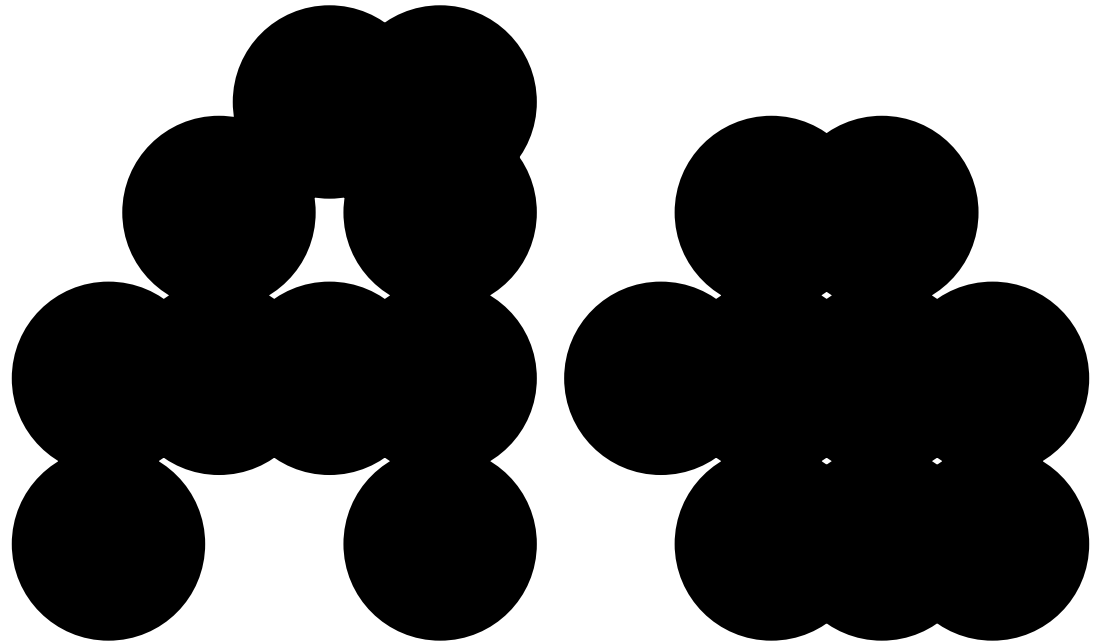


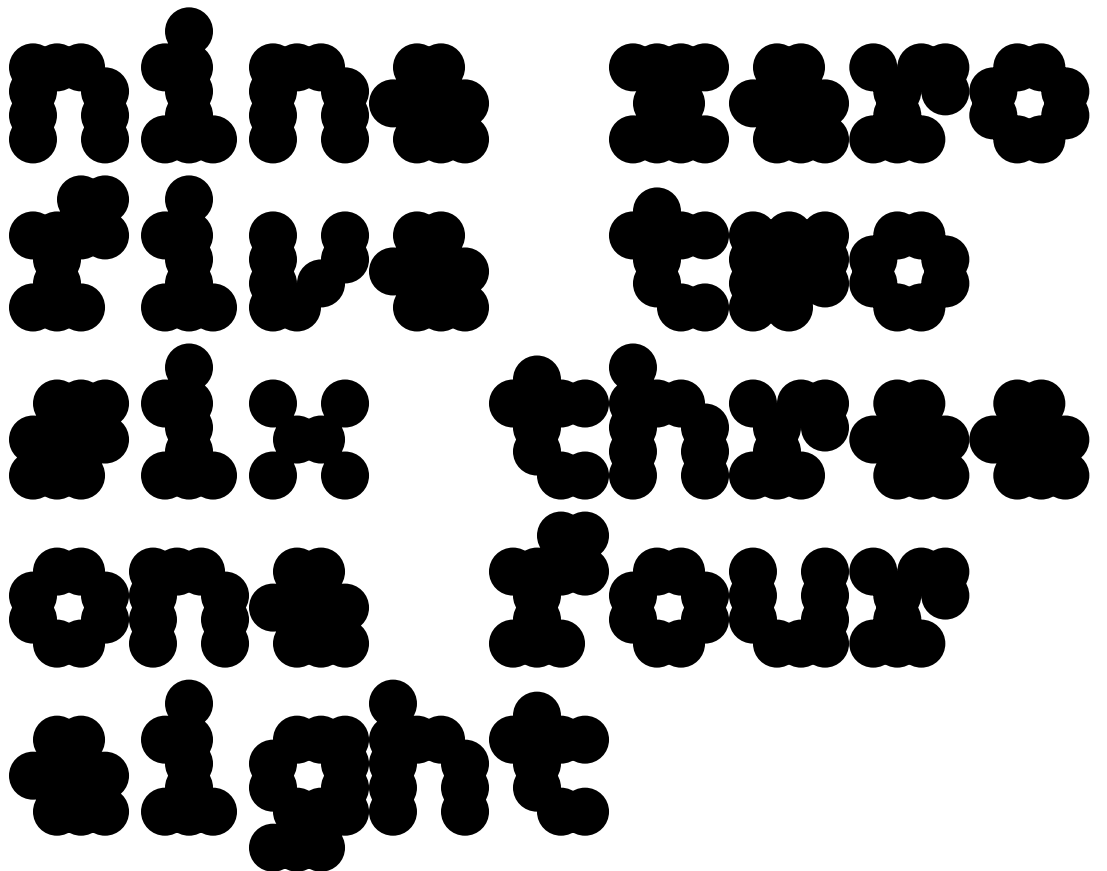
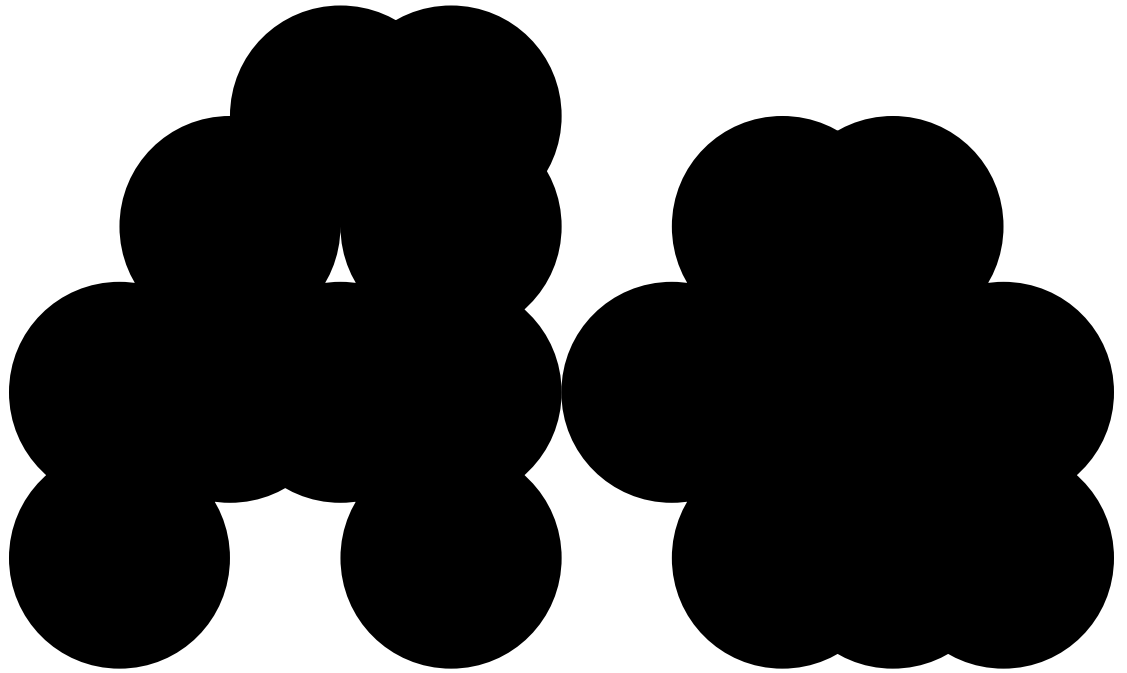


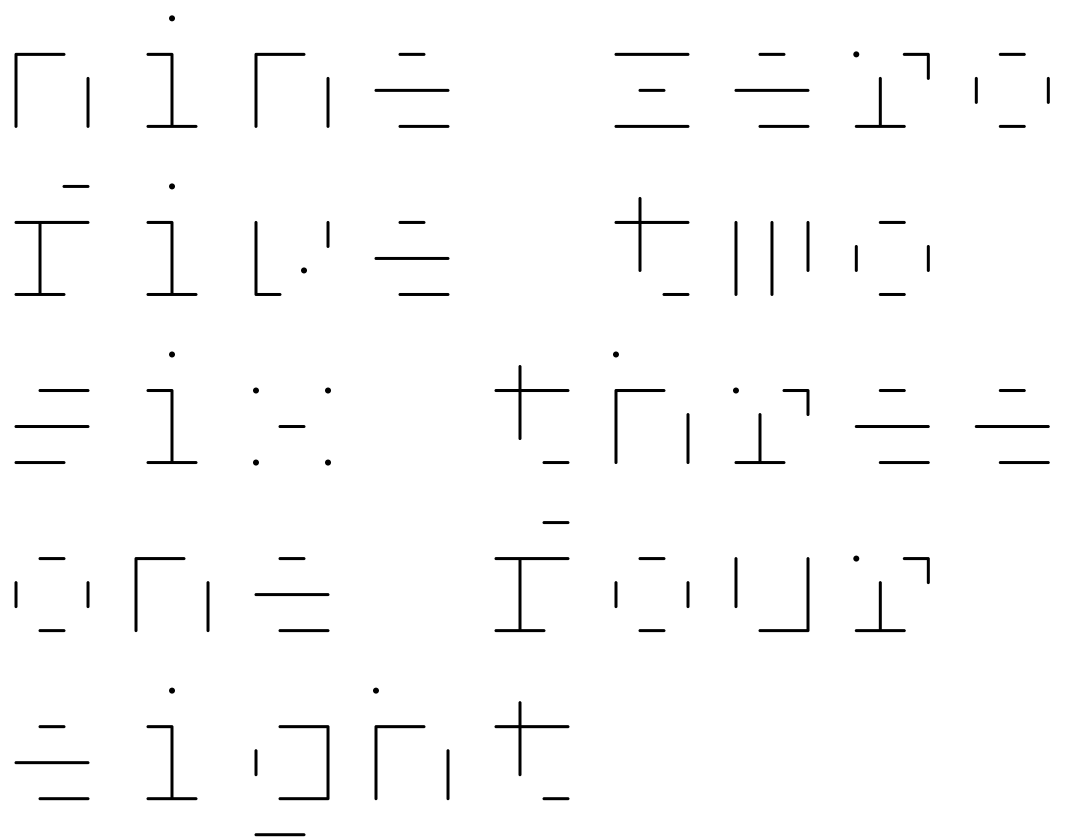
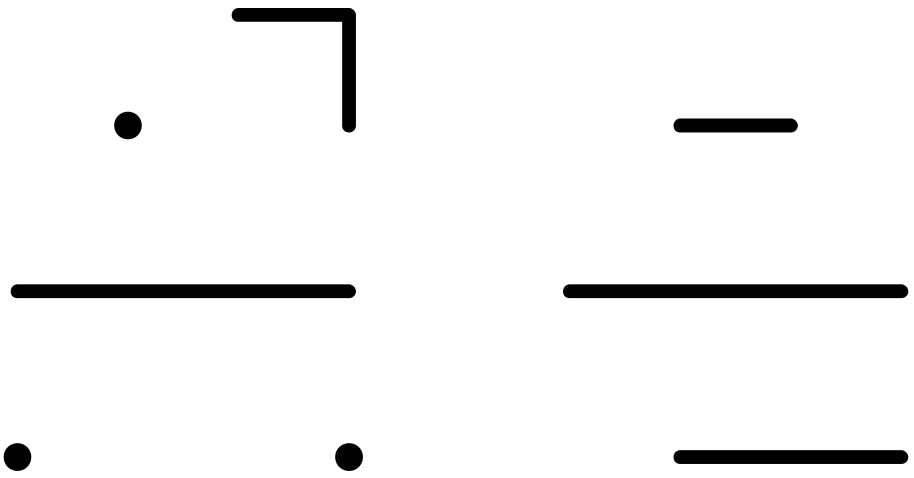


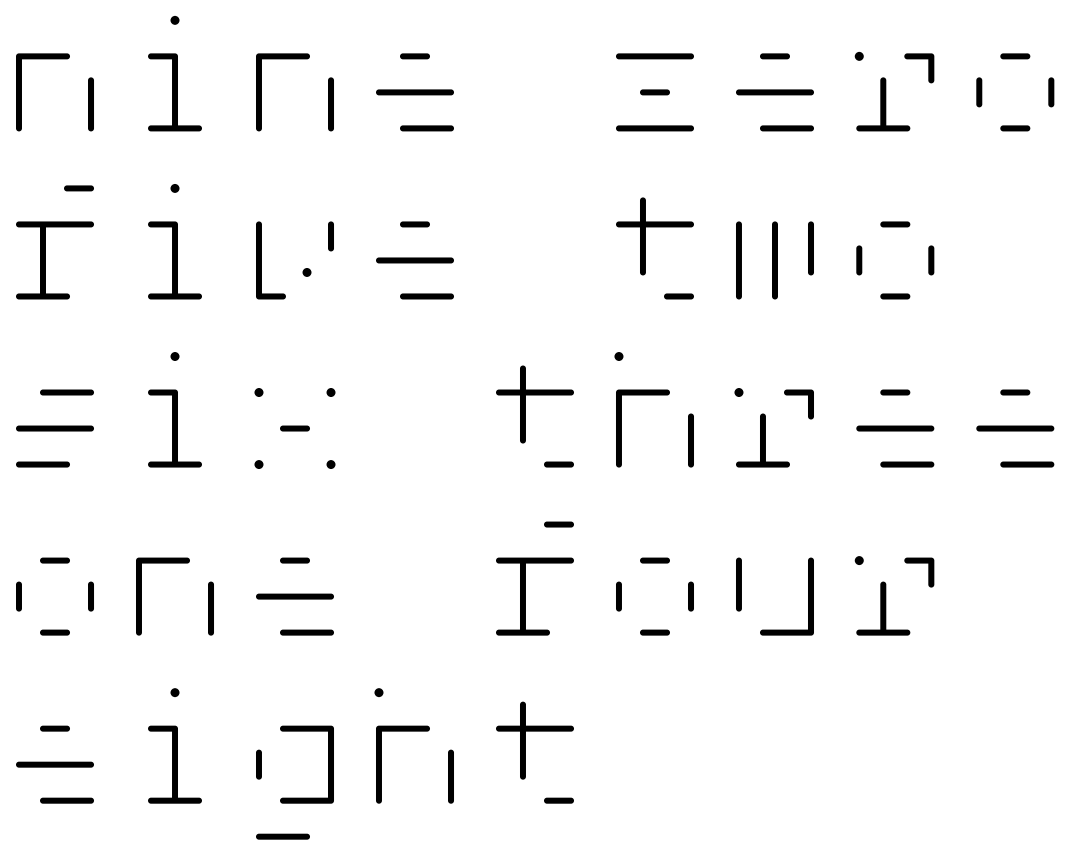
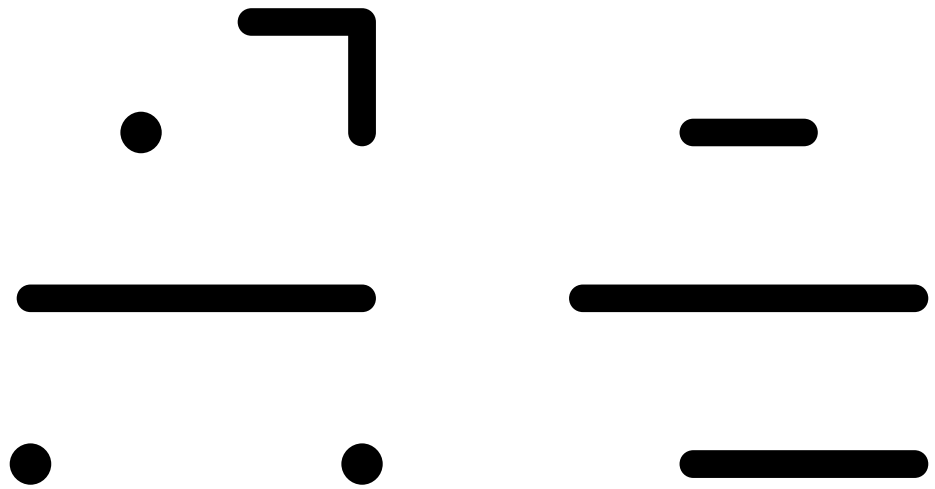


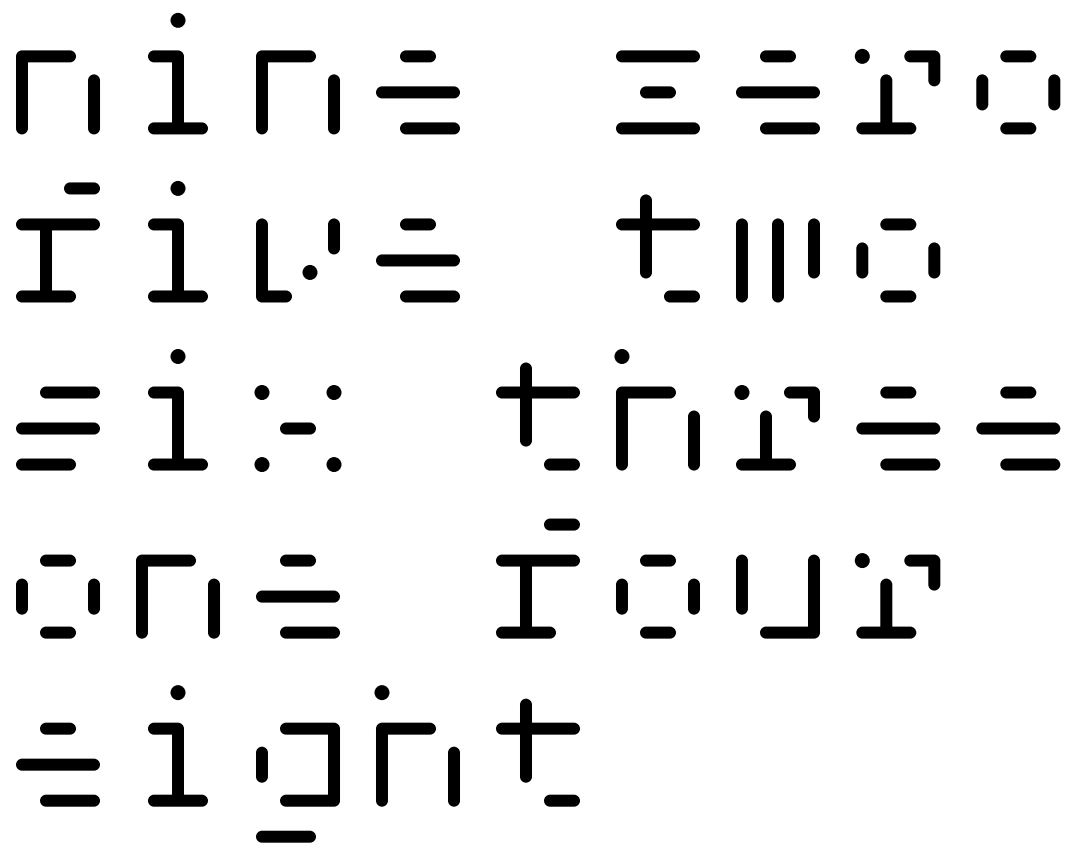
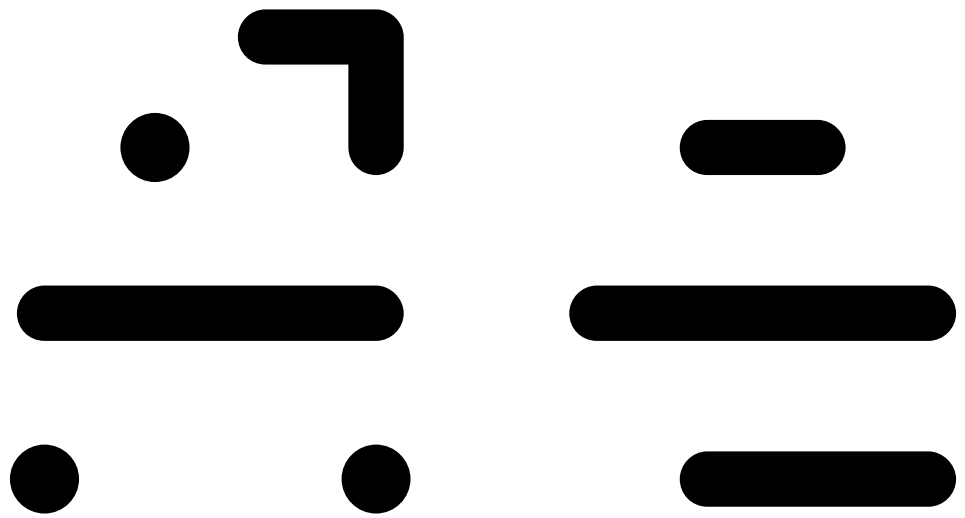


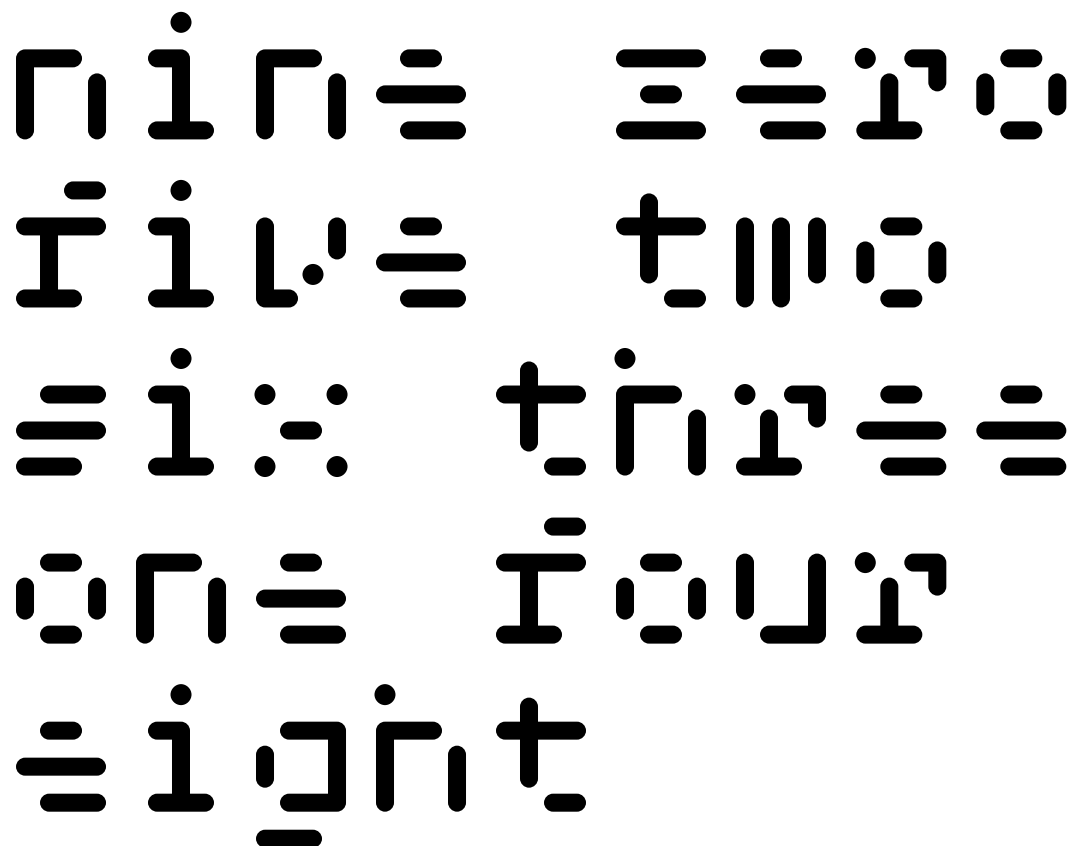
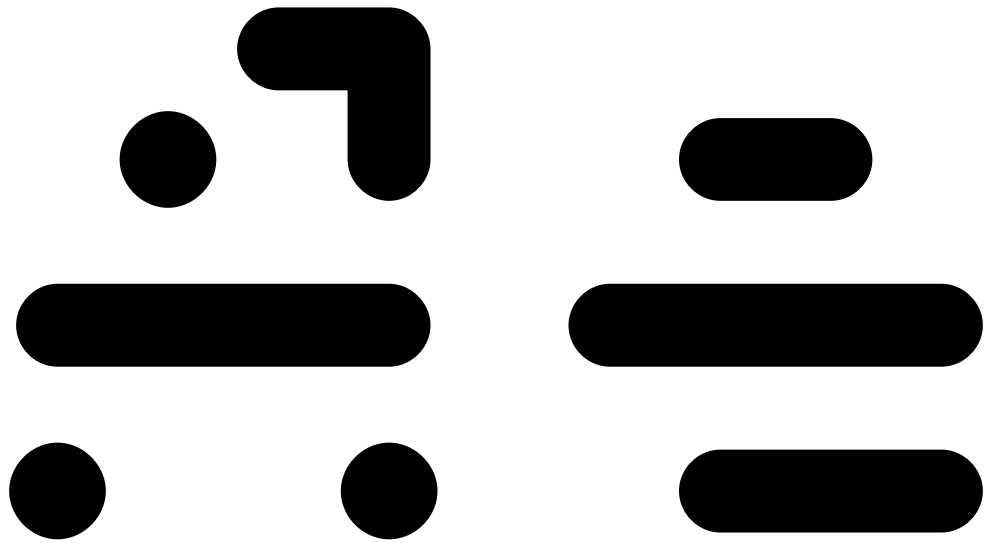


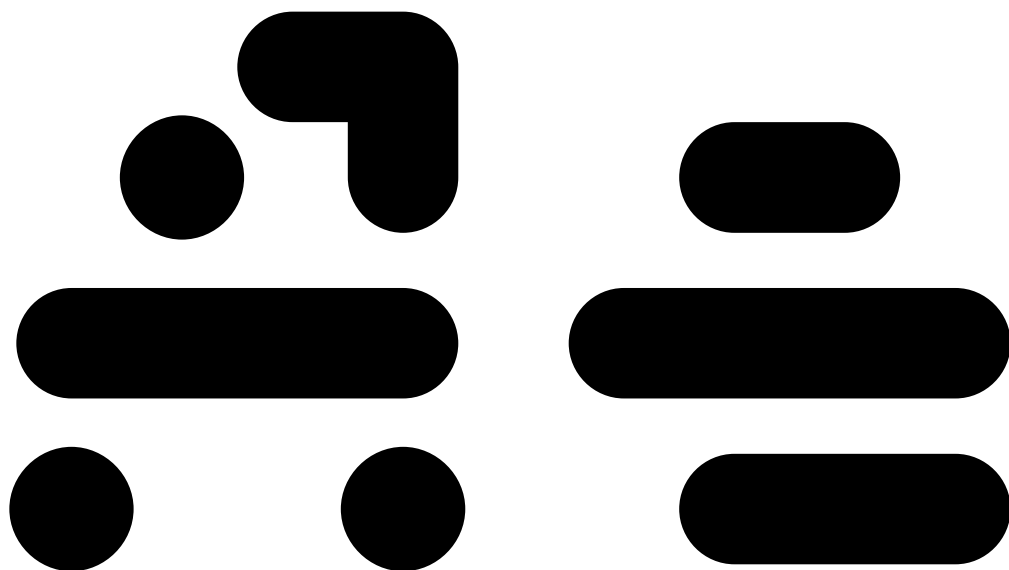




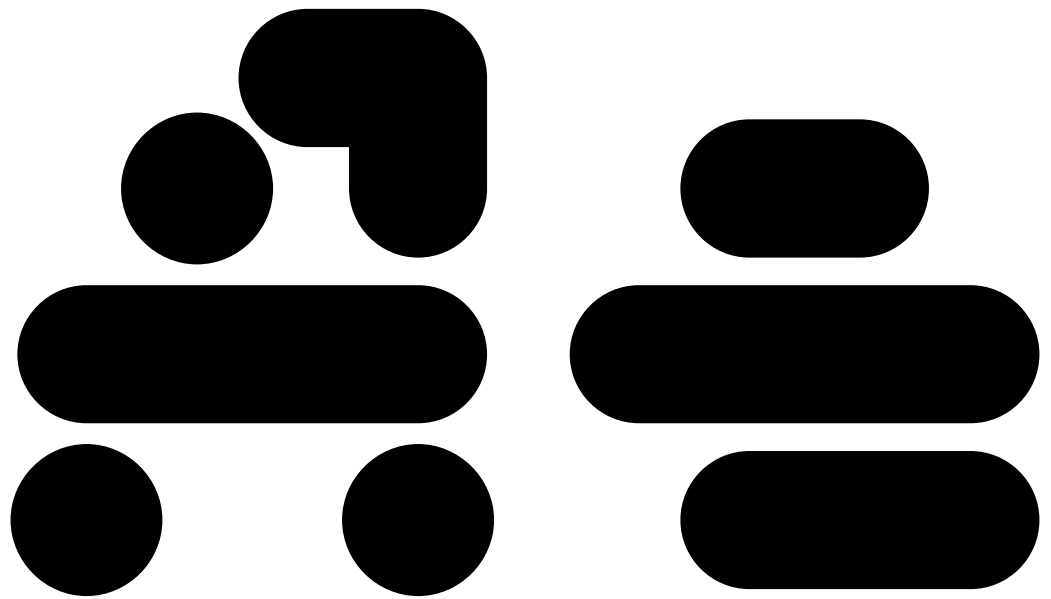




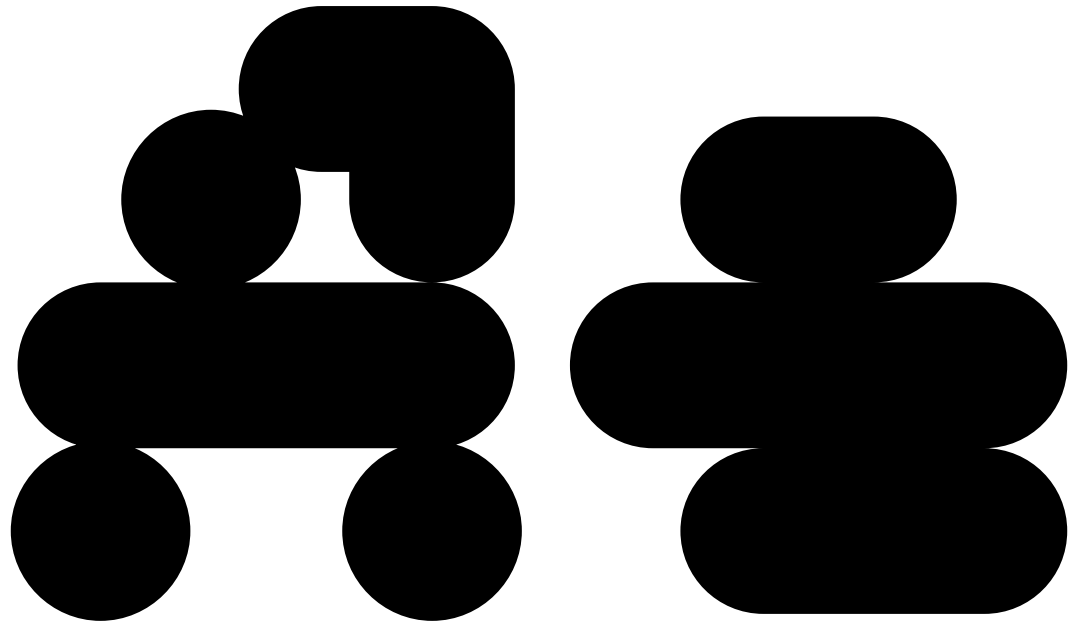




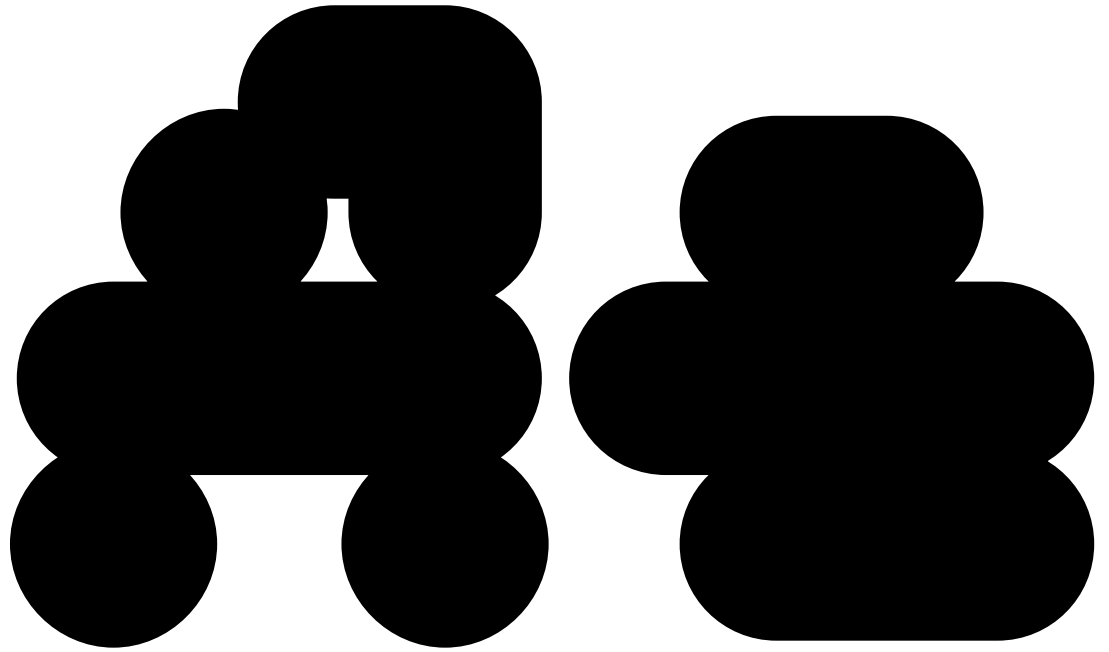
n i n = = = i o
i i l = t n o
= i : t n i = =
o n = i o u i
= i g n t



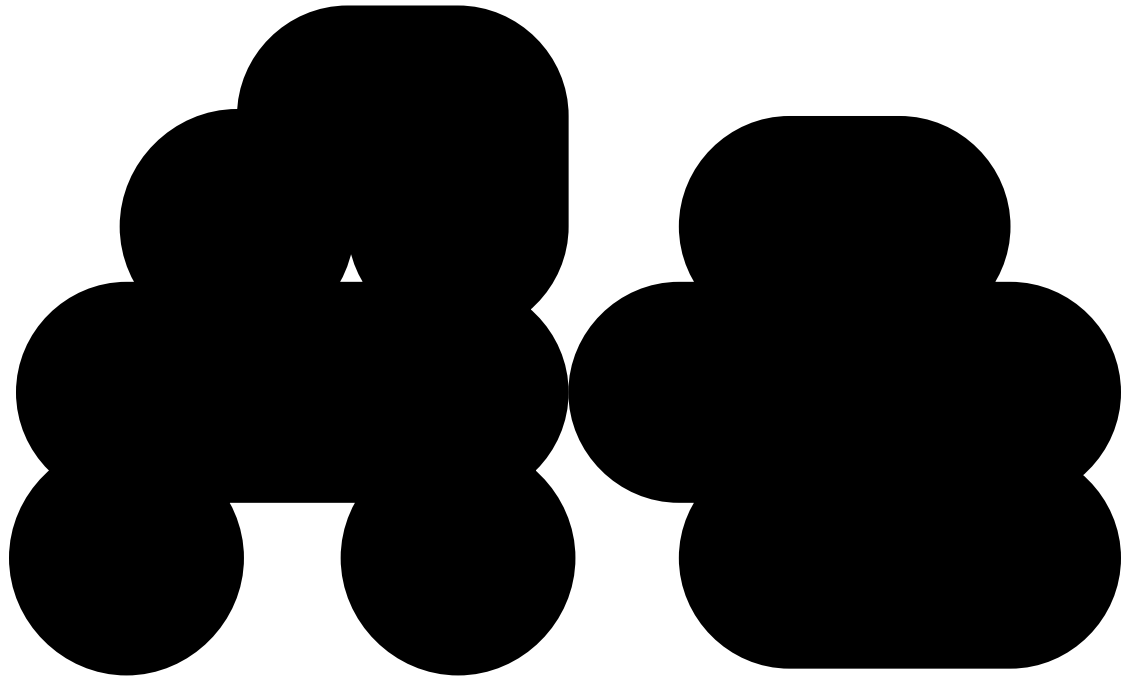
n i n = z = p o
f i l = t u o
= i : t n p = =
o n = i o u p
= i g n t



ni n z z z z z
i i l z t n o
s i : t n z z
o n z i o y
z i g n t



nine zero
five two
six three
one four
eight



nine zero
five two
six three
one four
eight

Latin 1 standard character set
in OTF, TTF, WOFF and WOFF 2
encoding.

For licensing options and
terms, please go to:
[www.muirmcneil.com/about/
licensing-and-usage/](http://www.muirmcneil.com/about/licensing-and-usage/)

À Á Â Ã Ä Å Æ Ç È É Ê Ë Ì Í Î Ï
Ð Ñ Ò Ó Ô Õ Ö × Ø Ù Ú Û Ü Ý Þ
ß à á â ã ä å æ ç è é ê ë ì í î ï
ñ ò ó ô õ ö × ù ú û ü ý þ ß

À Á Â Ã Ä Å Æ Ç È É Ê Ë Ì Í Î Ï
Ð Ñ Ò Ó Ô Õ Ö × Ø Ù Ú Û Ü Ý Þ
ß à á â ã ä å æ ç è é ê ë ì í î ï
ñ ò ó ô õ ö × ù ú û ü ý þ ß

À Á Â Ã Ä Å Æ Ç È É Ê Ë Ì Í Î Ï
Ð Ñ Ò Ó Ô Õ Ö × Ø Ù Ú Û Ü Ý Þ
ß à á â ã ä å æ ç è é ê ë ì í î ï
ñ ò ó ô õ ö × ù ú û ü ý þ ß