

---

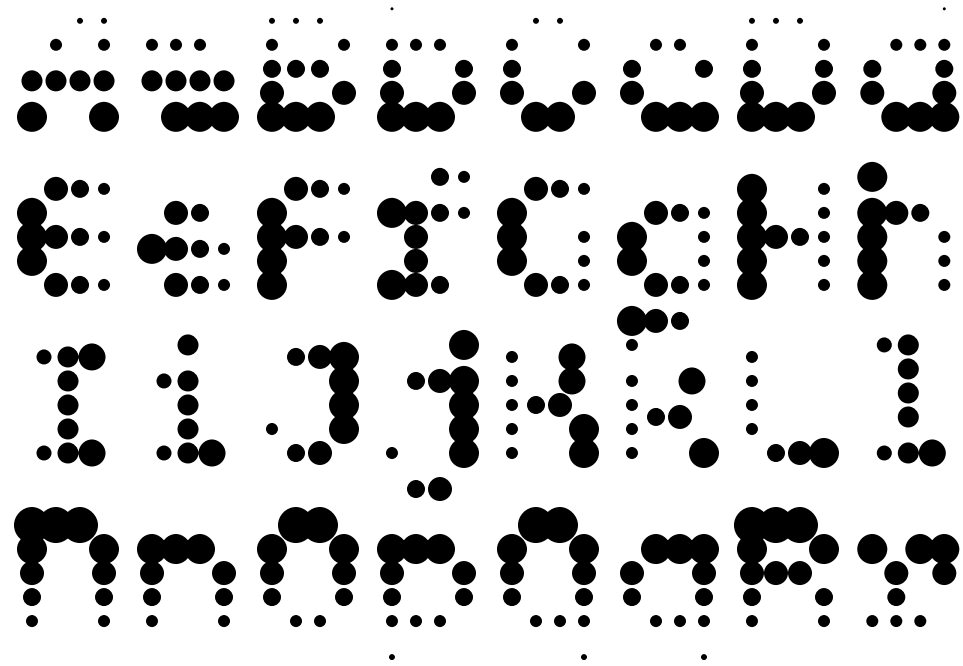
TwoTone, a tonal variant of MuirMcNeil's TwoPoint H, is a part of MuirMcNeil's extensive Two Type System.

The many subgroups that comprise the Two System have not been designed as independent alphabets but as the framework of an expansive design space in which individual glyphs are configured to collaborate with each other harmoniously.

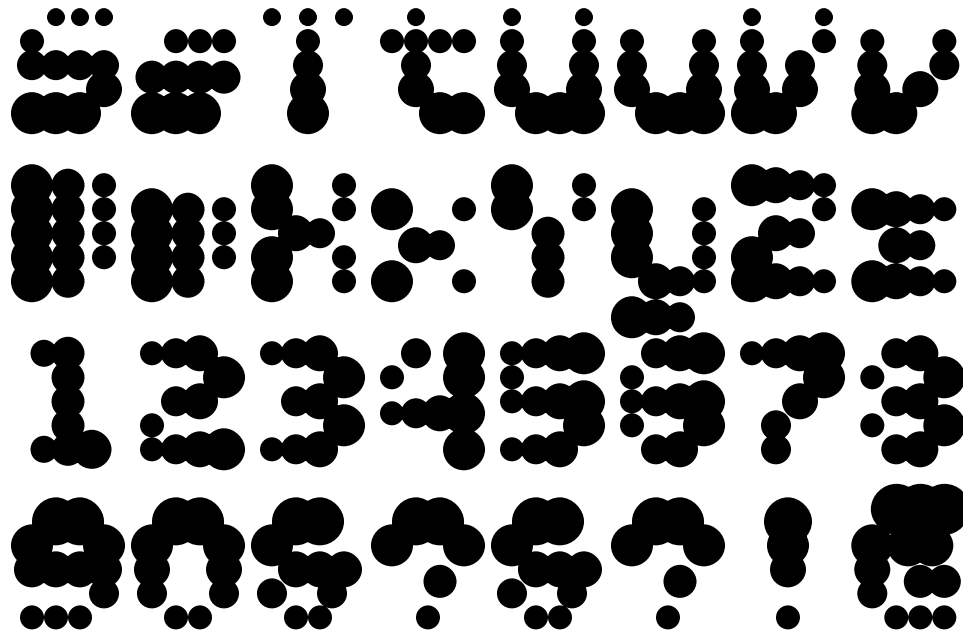
A common grid determines the positioning of both letterforms, the spaces between them, and sets of corresponding base pattern panels, with every element aligning precisely, so that the superimposition of any pair of the system's 200+ modular alphabets will result in a single, unique instance taken from thousands of possible combinations. Working with design software, users can amalgamate selected styles either in precisely interlocking layers or in calibrated offsets, applying outlines, tints, colours, textures, patterns and transparencies as appropriate.

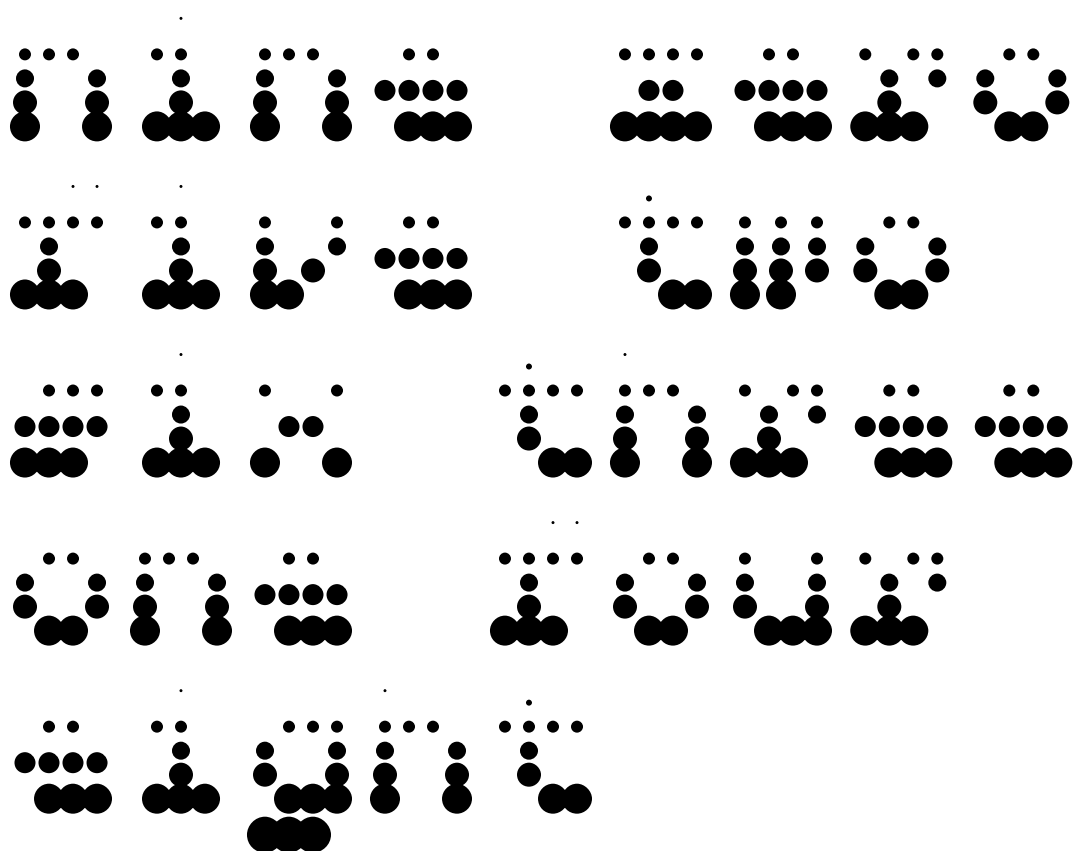
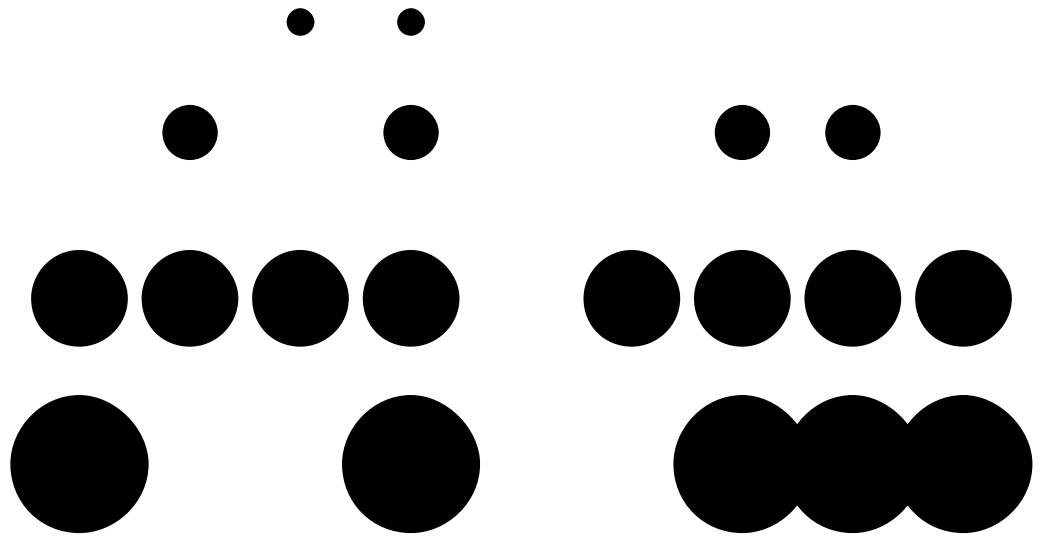
The design opportunities offered by the Two System are documented in detail in System Process Form, published by Volume / Unit Editions and Thames & Hudson. The publication presents a curated selection of these two-part compounds along with many even more exuberant type forms composed from the millions of options afforded by combinations of three layers.

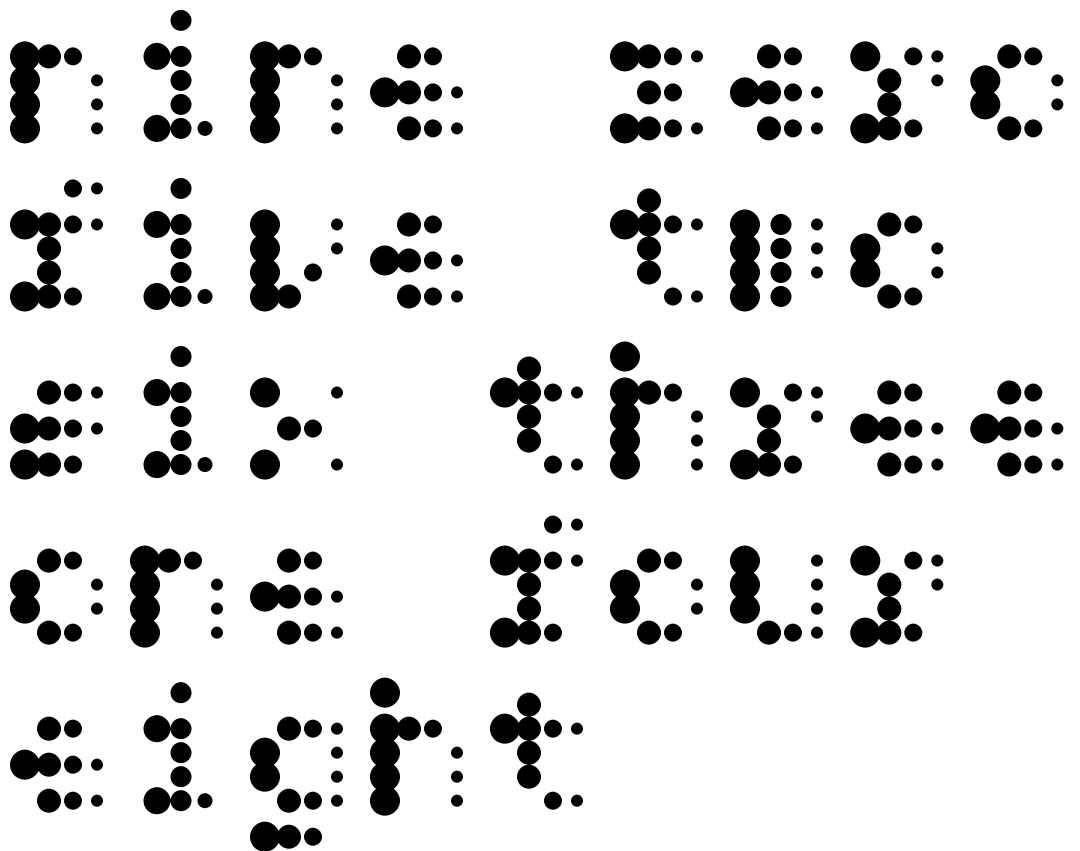
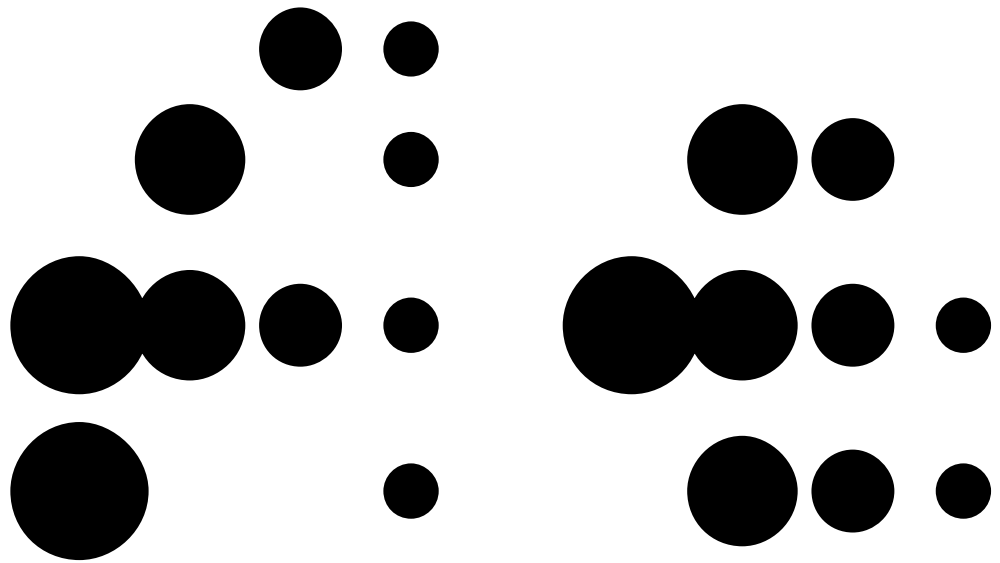
---

**TwoTone Regular**

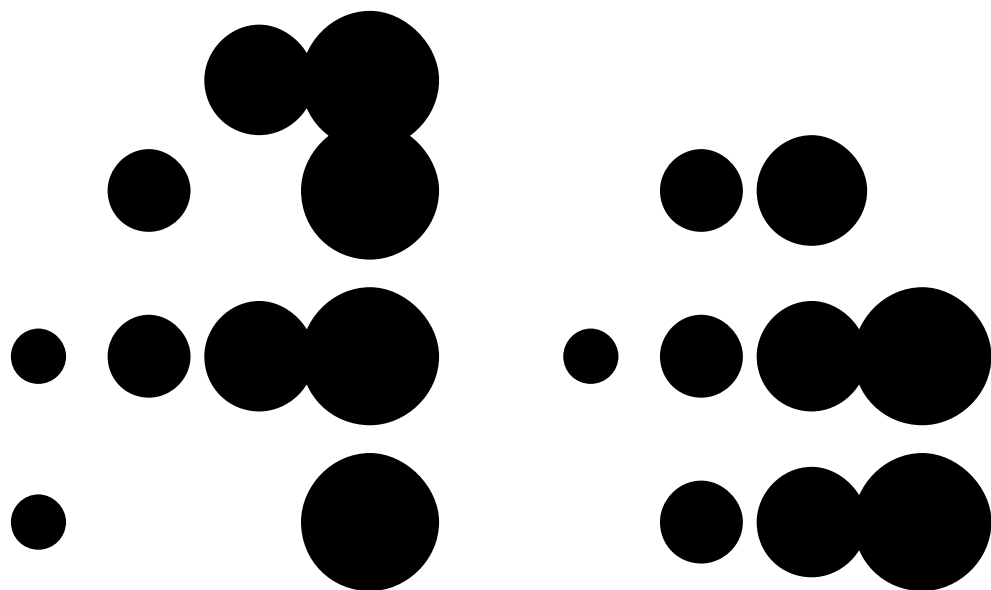
---

**TwoTone Bold**

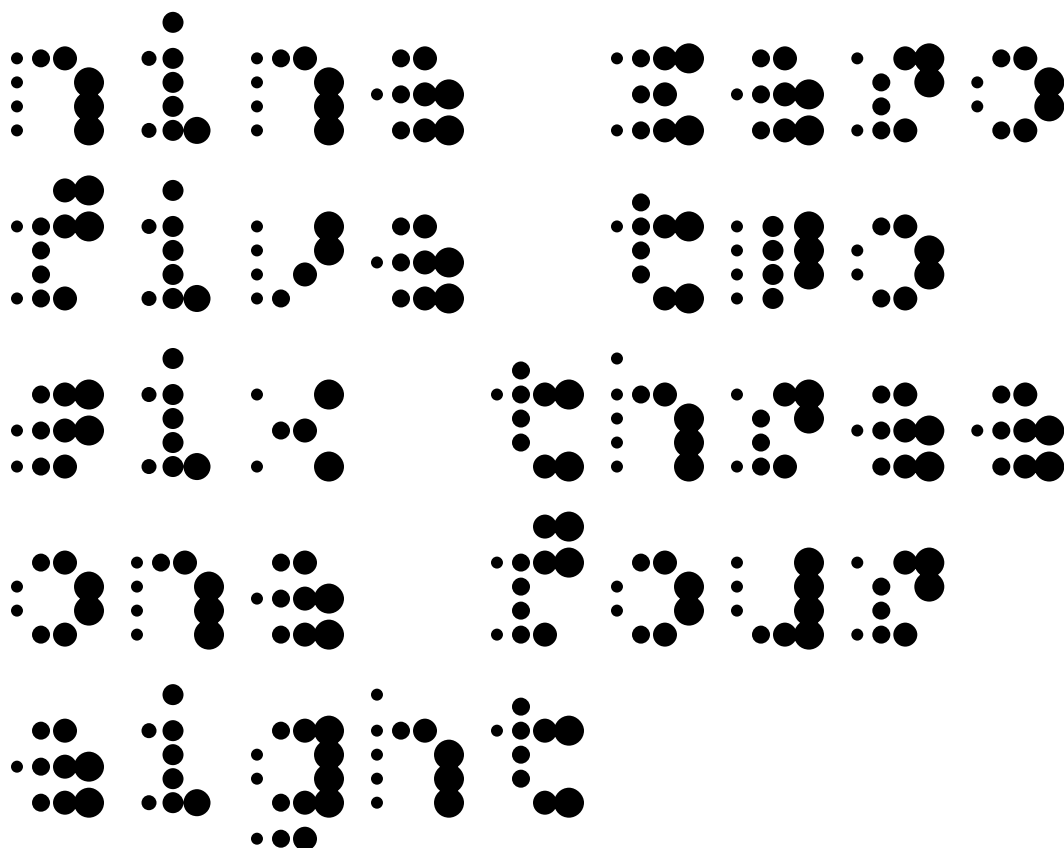


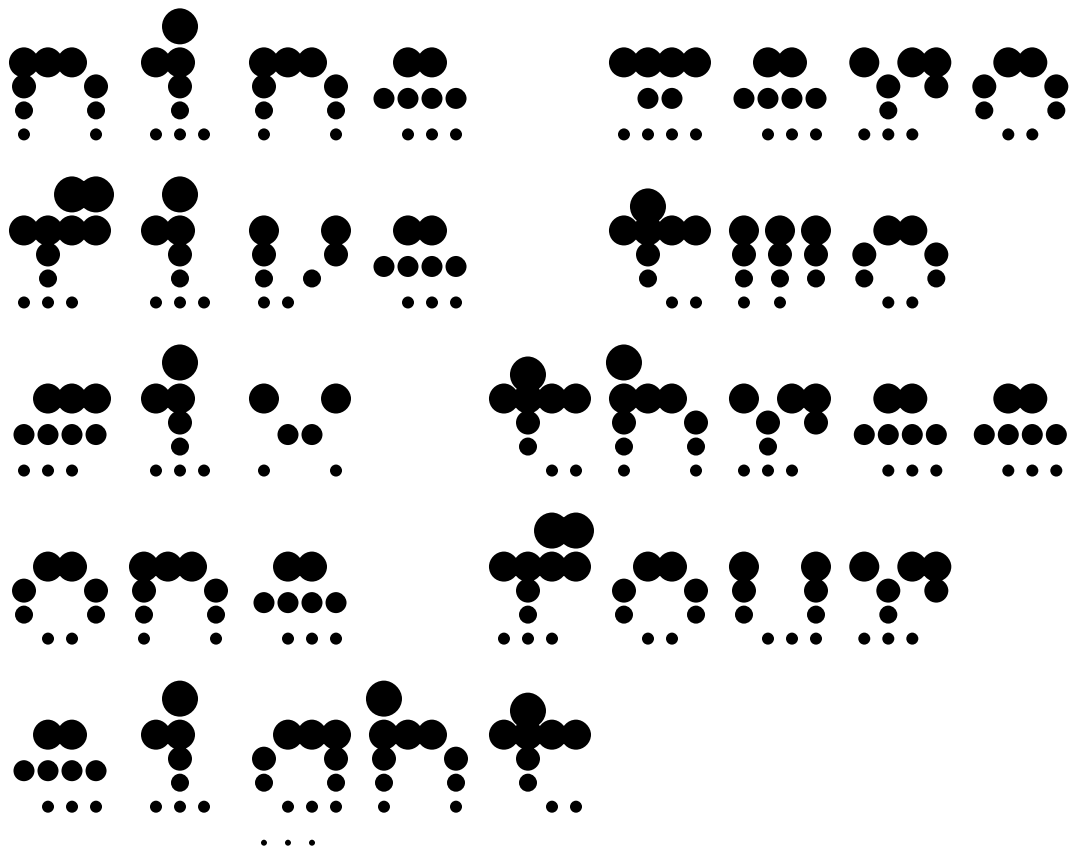
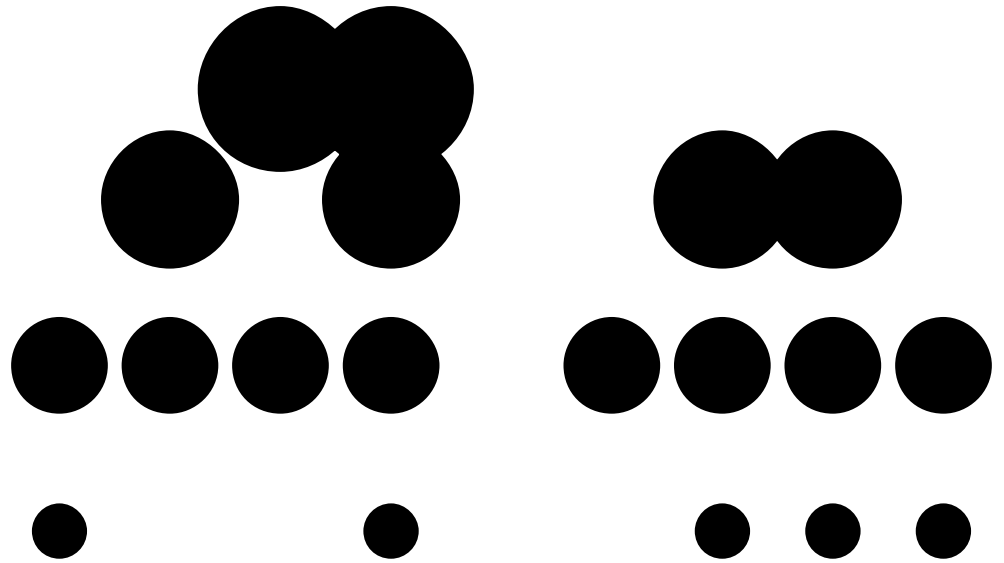


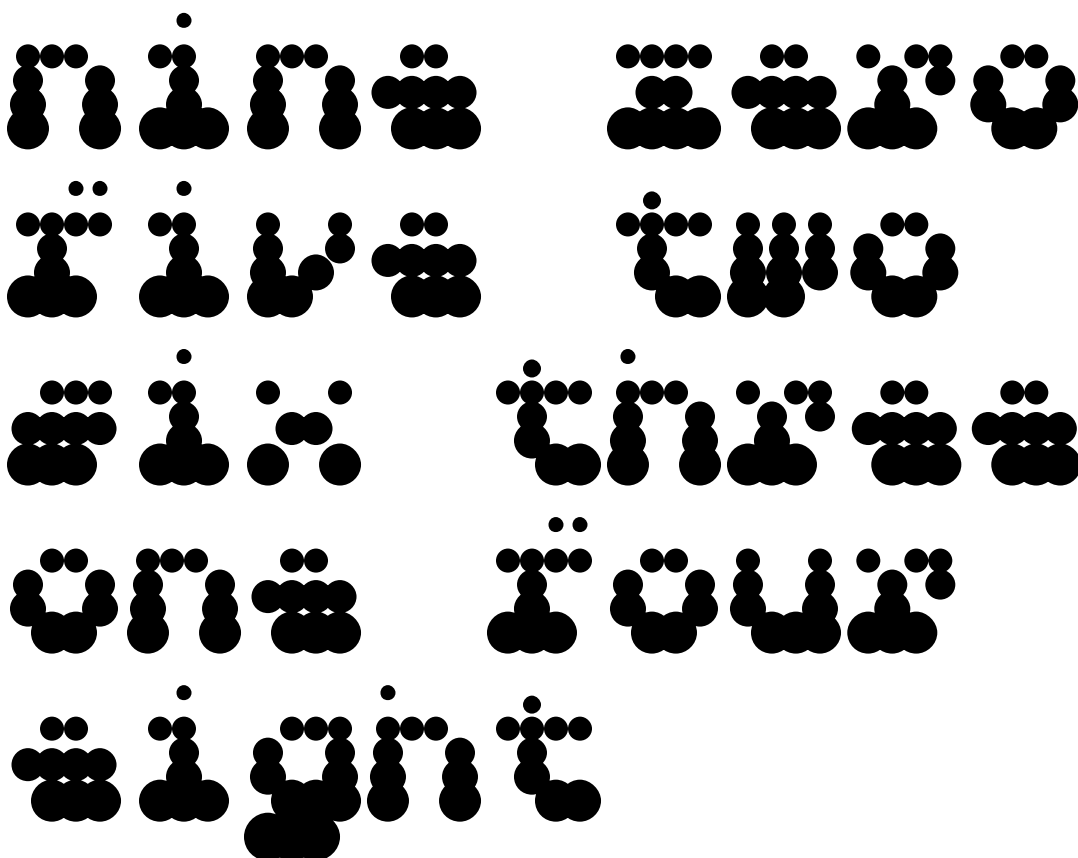
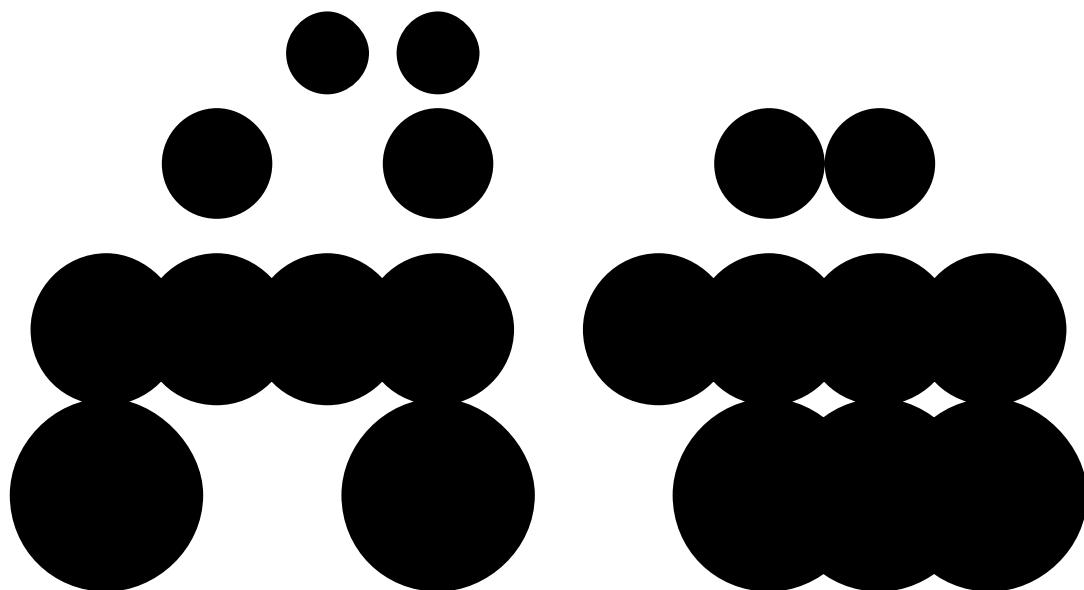
TwoTone  
Right Regular  
290pt

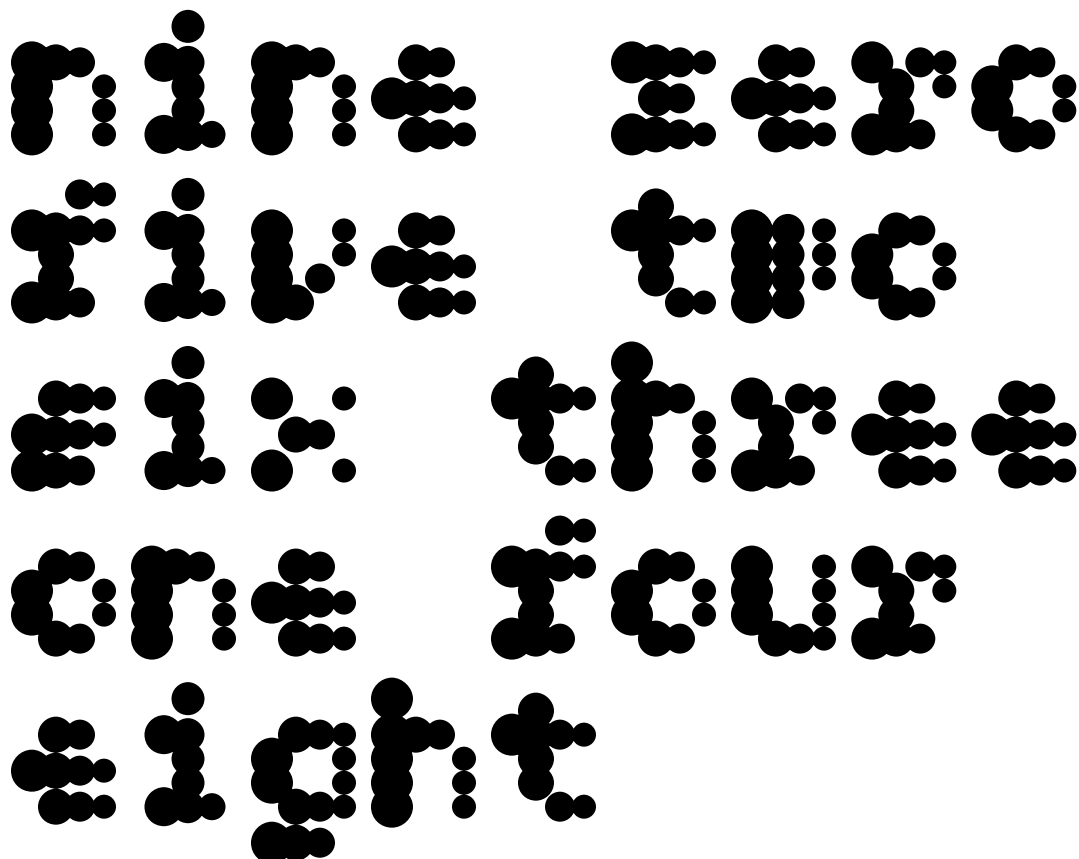
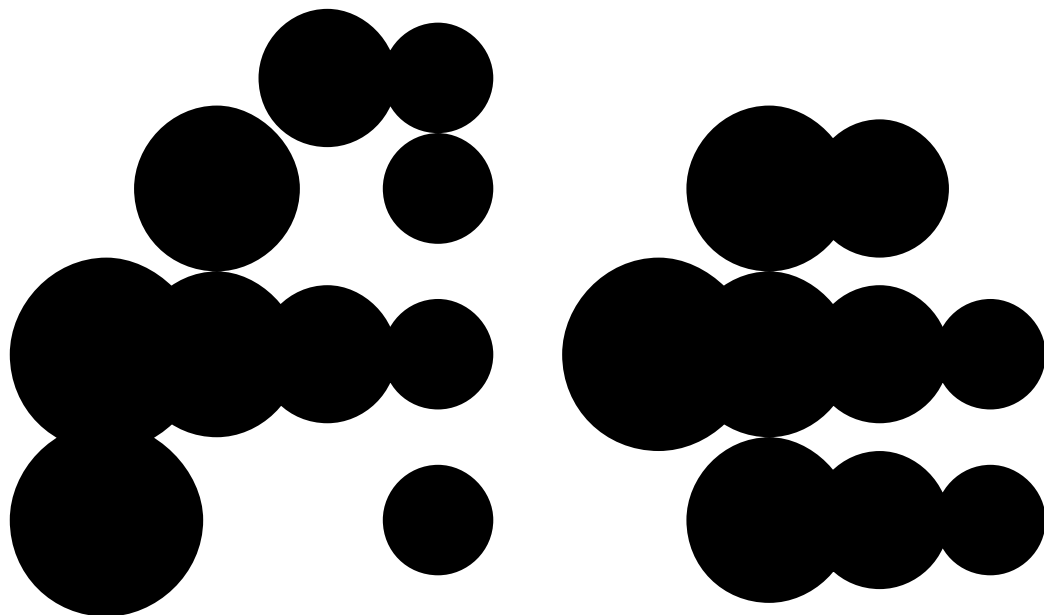


TwoTone  
Right Regular  
63pt



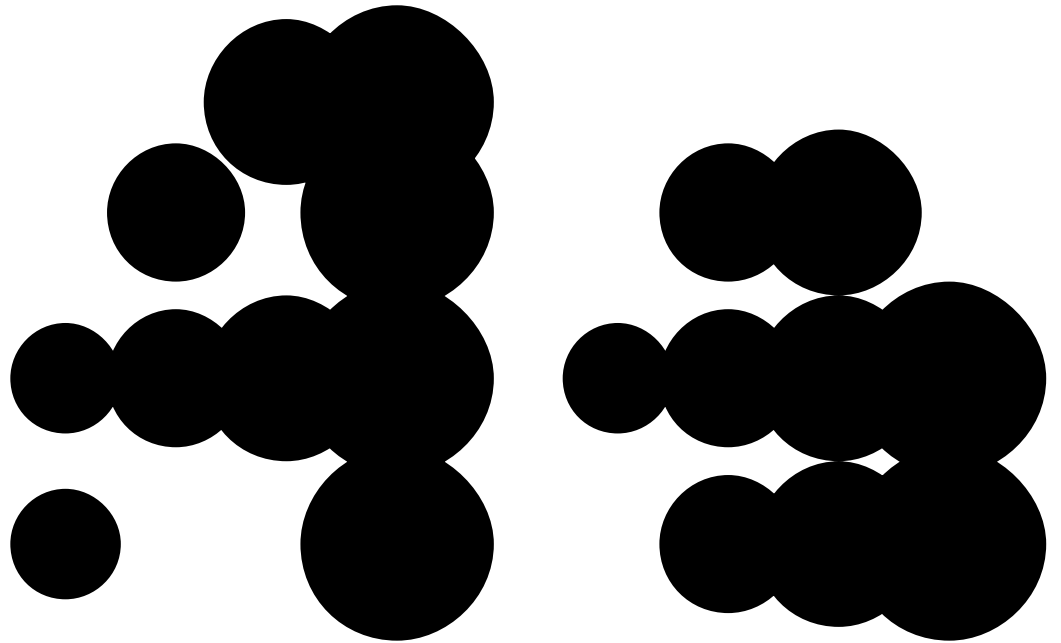




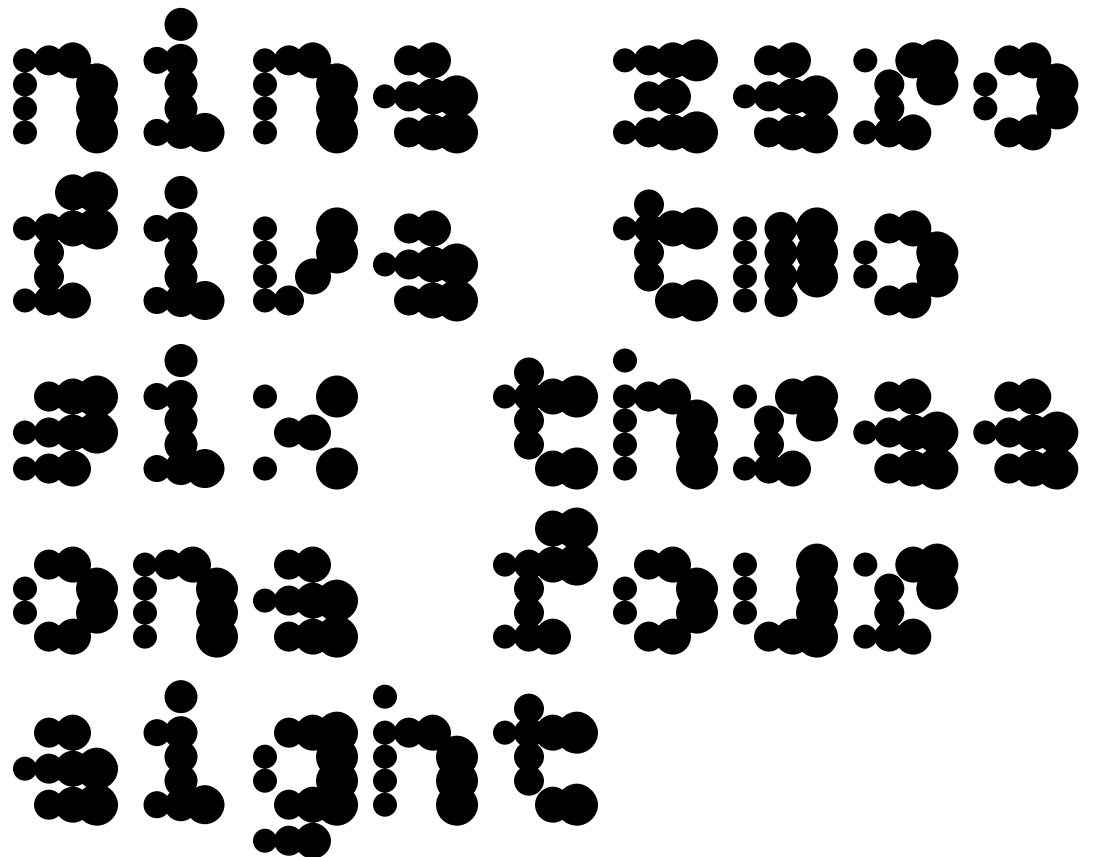


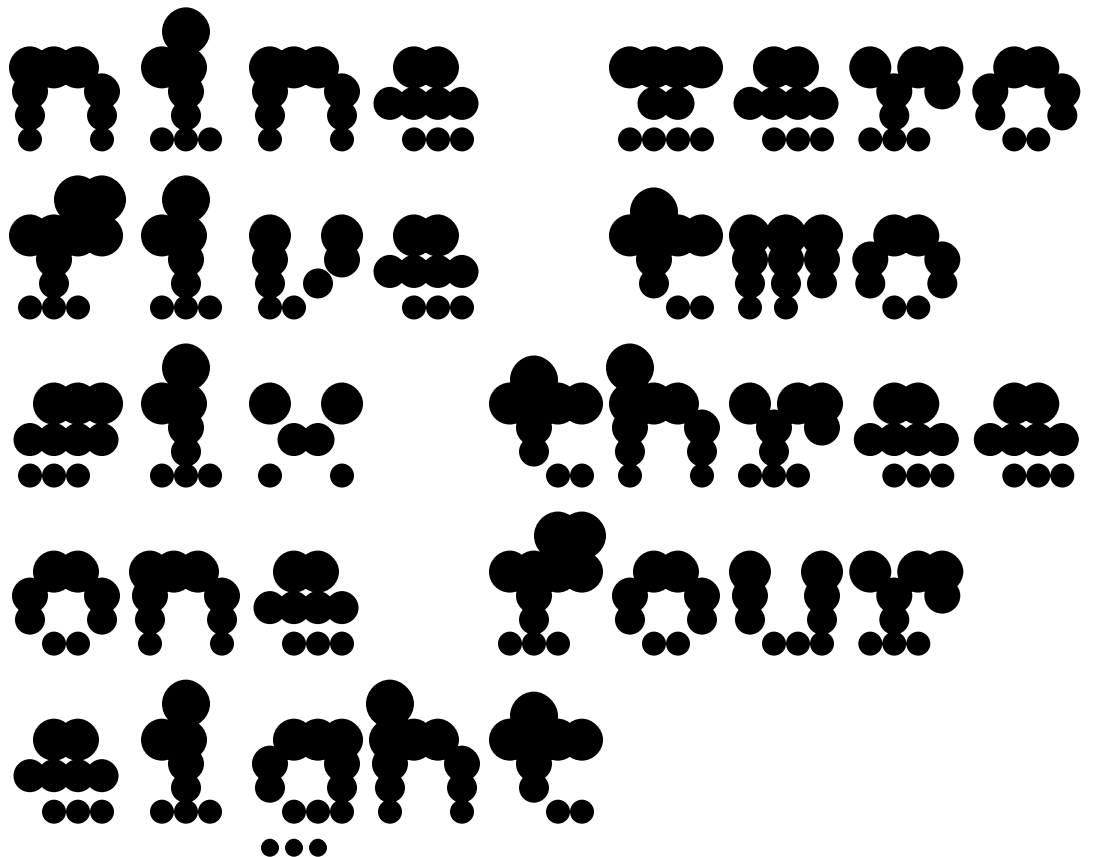
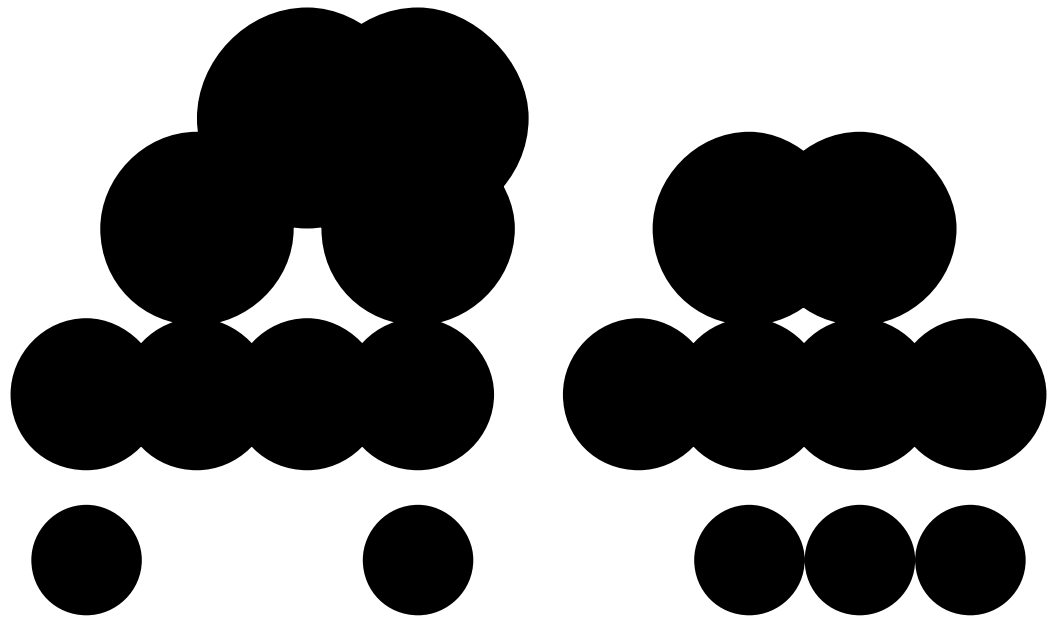


TwoTone  
Right Bold  
290pt



TwoTone  
Right Bold  
63pt





**TwoTone  
Character Set**

Latin 1 standard character set  
in OTF, TTF, WOFF and WOFF 2  
encoding.

For licensing options and  
terms, please go to:  
[www.muirmcneil.com/about/  
licensing-and-usage/](http://www.muirmcneil.com/about/licensing-and-usage/)

